

Appendix A: Permits

A.2 USACOE Nationwide Permit (File No. POH-2011-00297)



REPLY TO
ATTENTION OF

DEPARTMENT OF THE ARMY
U.S. ARMY CORPS OF ENGINEERS, HONOLULU DISTRICT
Guam Field Office, PSC 455, Box 188, FPO AP 96540

November 12, 2013

Regulatory Branch

File No. POH-2011-00297

Mr. Christopher A. Lund
Gershman, Brickner & Bratton Inc.
8550 Arlington Boulevard, Suite 304
Fairfax, VA 22031

Nationwide Permit Verification

Dear Mr. Lund:

This is in response to your application; on behalf of Gershman, Brickner & Bratton, Inc. (GBB); for Department of the Army (DA) authorization to discharge fill material over wetlands necessary to close the Ordot Dump and obtain compliance with the US District Court of Guam Consent Decree Order (Civil Case No. 02-00022, Document Number 55). The proposed project is located at the Ordot Dump, off Dero Road, in Ordot, Guam; 13° 26' 20" N., 144° 45' 02" W. This regulatory action has been assigned file number POH-2011-00297, which should be referred to in all future correspondence with this office.

The proposed project is intended to stop unauthorized leachate, dump storm water, trash and debris discharges to restore water quality of the surrounding degraded wetlands and streams of the Lonfit River watershed. The project will involve clearing, grading, excavation and filling in adjacent wetlands; the realignment of a portion of a stream channel (Western Channel); and the extension of the Western Channel culvert under Dero Road to facilitate the construction of a cover system, storm water management network, leachate collection system, gas management system, and monitoring features necessary to close the dump in accordance with conditions of the Consent Decree.

DA permit authorization is necessary because we have preliminarily determined that the project would involve discharges of fill material into waters of the U.S., including wetlands, under DA regulatory jurisdiction. Based upon the information and plans provided, we hereby verify that the proposed work, which would be performed in accordance with the enclosed plan (28 sheets dated November 2013) is authorized by Nationwide Permit (NWP) 32, *Completed Enforcement Actions*. GBB must comply with the enclosed *Nationwide Permit General Conditions* and the *Honolulu District Regional Conditions* to the extent applicable. Additionally, GBB must comply with the following special conditions:

1. GBB must prepare and submit an Archaeological Monitoring and Data Recovery Plan (Plan) to the Guam Department of Parks and Recreation,

Historic Resources Division, State Historic Preservation Officer (SHPO). The SHPO must review and concur with the Plan prior to commencing soil disturbing activities.

2. Prior to construction activities in wetlands and the western channel, GBB must prepare and submit to this office for concurrence a Monitoring Plan for the construction of the onsite wetland storm water detention ponds and the realignment of western channel. The monitoring plan must identify construction performance standards, invasive species management, naturally sustainable ecological success criteria, adaptive management, monitoring frequency and duration, and reporting. At minimum, monitoring must occur annually for five years or until ecological success criteria have been demonstrated. Monitoring reports must be submitted to this office within 30 days of each assessment.
3. Appropriate storm water and sediment management must be implemented and maintained before, during and after construction activities as necessary until exposed soil is re-vegetated and stabilized to prevent the introduction of sediment into adjacent wetlands and streams. Soil disturbing activities must be conducted during dry periods to the extent practicable.

The Guam Bureau of Statistics and Plans, Coastal Management Program (GCMP) provided a statement of concurrence that your project was consistent with the Coastal Zone Management Act and the provisions of the GCMP on July 3, 2013. The Guam Environmental Protection Agency (GEPA) issued a Water Quality Certification (WQC) under Section 401 of the Clean Water Act on July 25, 2013. The terms and conditions of the WQC are incorporated by reference into this authorization.

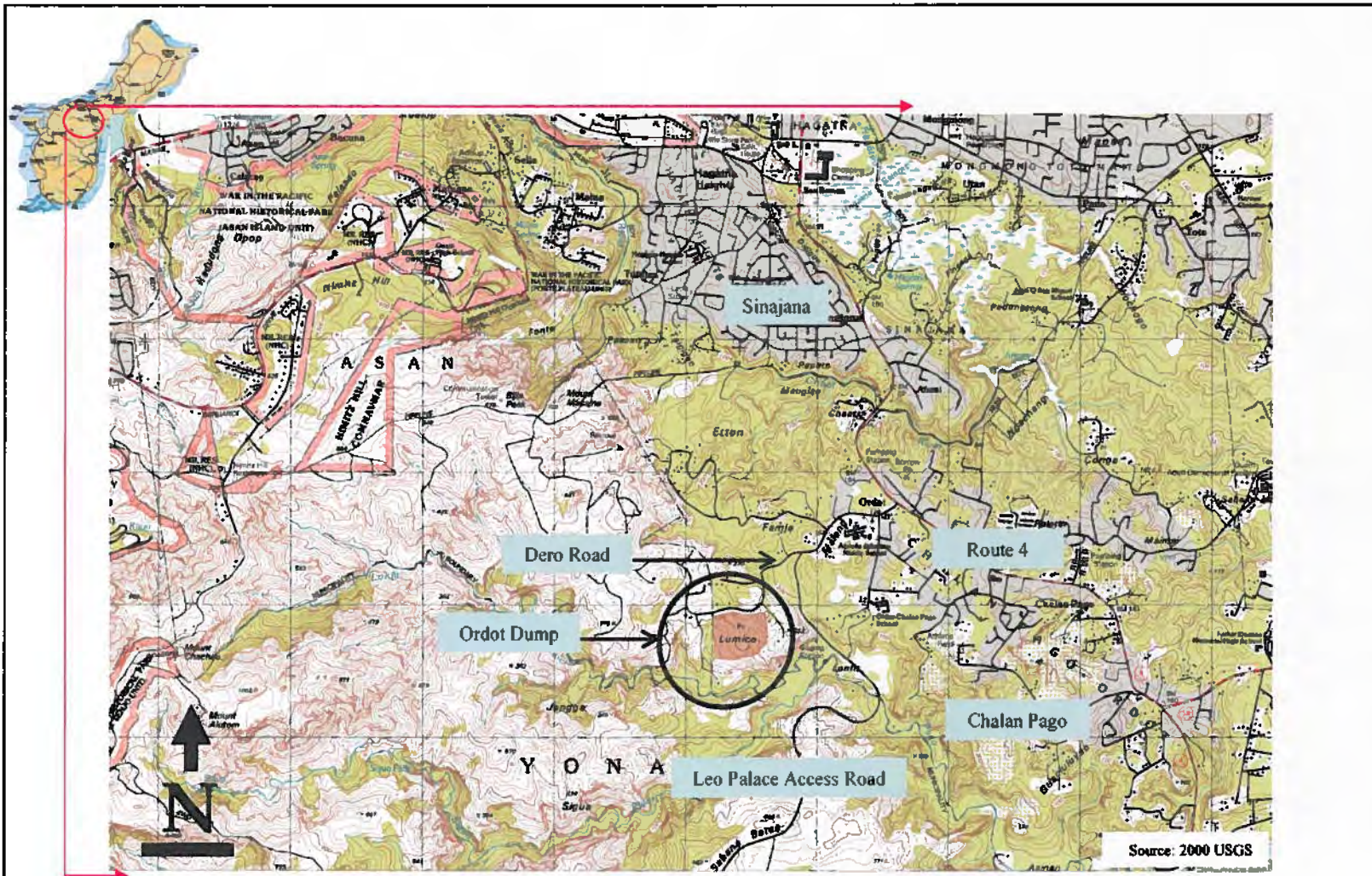
The work authorized under this NWP verification is valid until March 18, 2017, unless the NWP is modified, reissued, or revoked prior to that date. If the authorized work has not been completed by that date, please contact us to discuss the status of your authorization. Failure to comply with all terms and conditions of this NWP verification invalidates this authorization and could result in a violation. Nothing in this letter excuses the applicant from compliance with other Federal, State, or local statutes, ordinances, or regulations.

Upon completing the authorized work, GBB, or their authorized agent, must fill out and return the enclosed *Compliance Certificate with Department of the Army Permit* form. Thank you for your cooperation during the permit process. Should you have any questions, please contact me at (671) 339-2108 or by email at ryan.h.winn@usace.army.mil.

Sincerely,

A handwritten signature in black ink, appearing to read "Ryan H. Winn". The signature is fluid and cursive, with a prominent initial "R" and "W".

Ryan H. Winn
Project Manager



Location Map
Ordot Dump Closure Construction
ARC Environmental Services Inc.

Date
 April 2013

Figure No.
 1

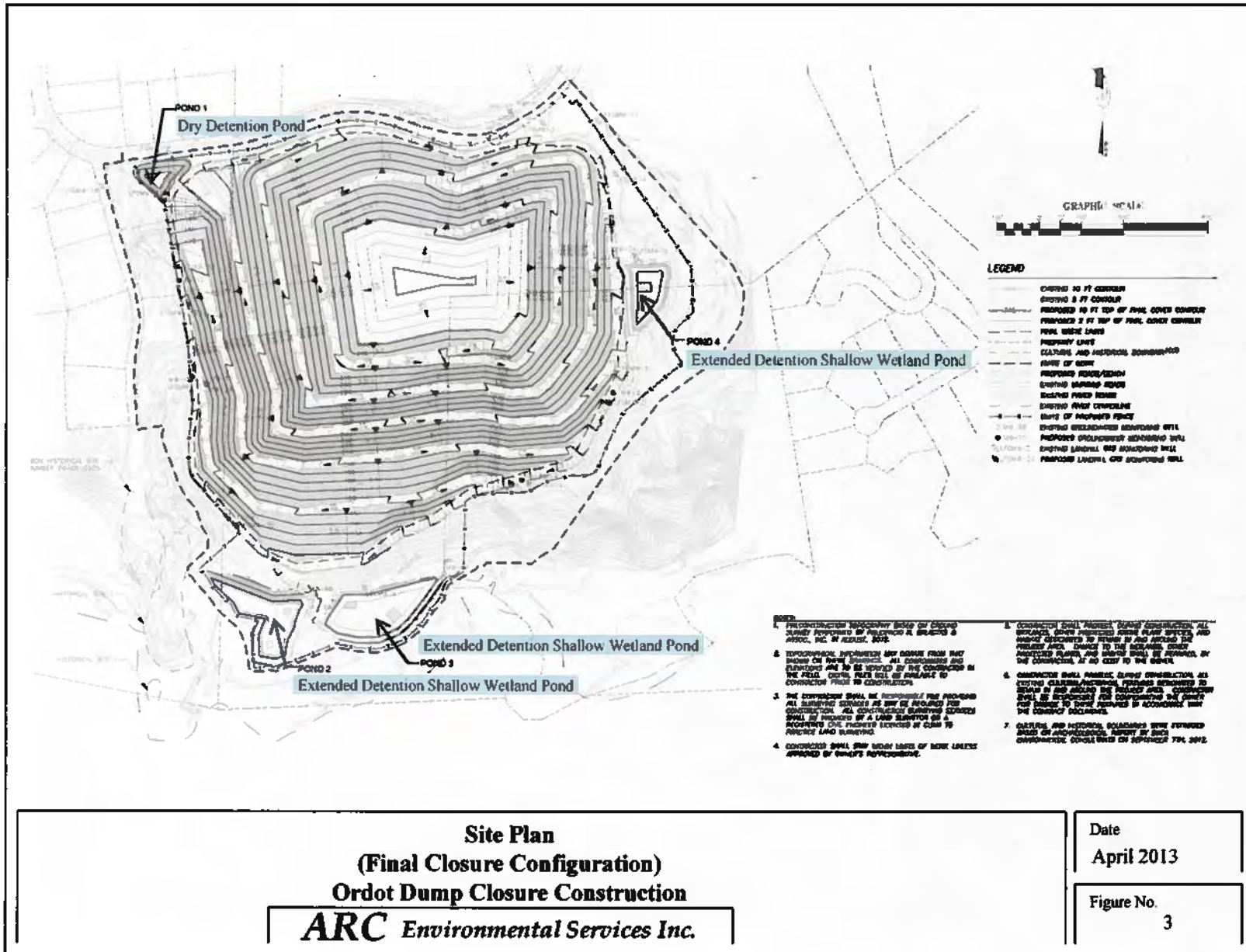


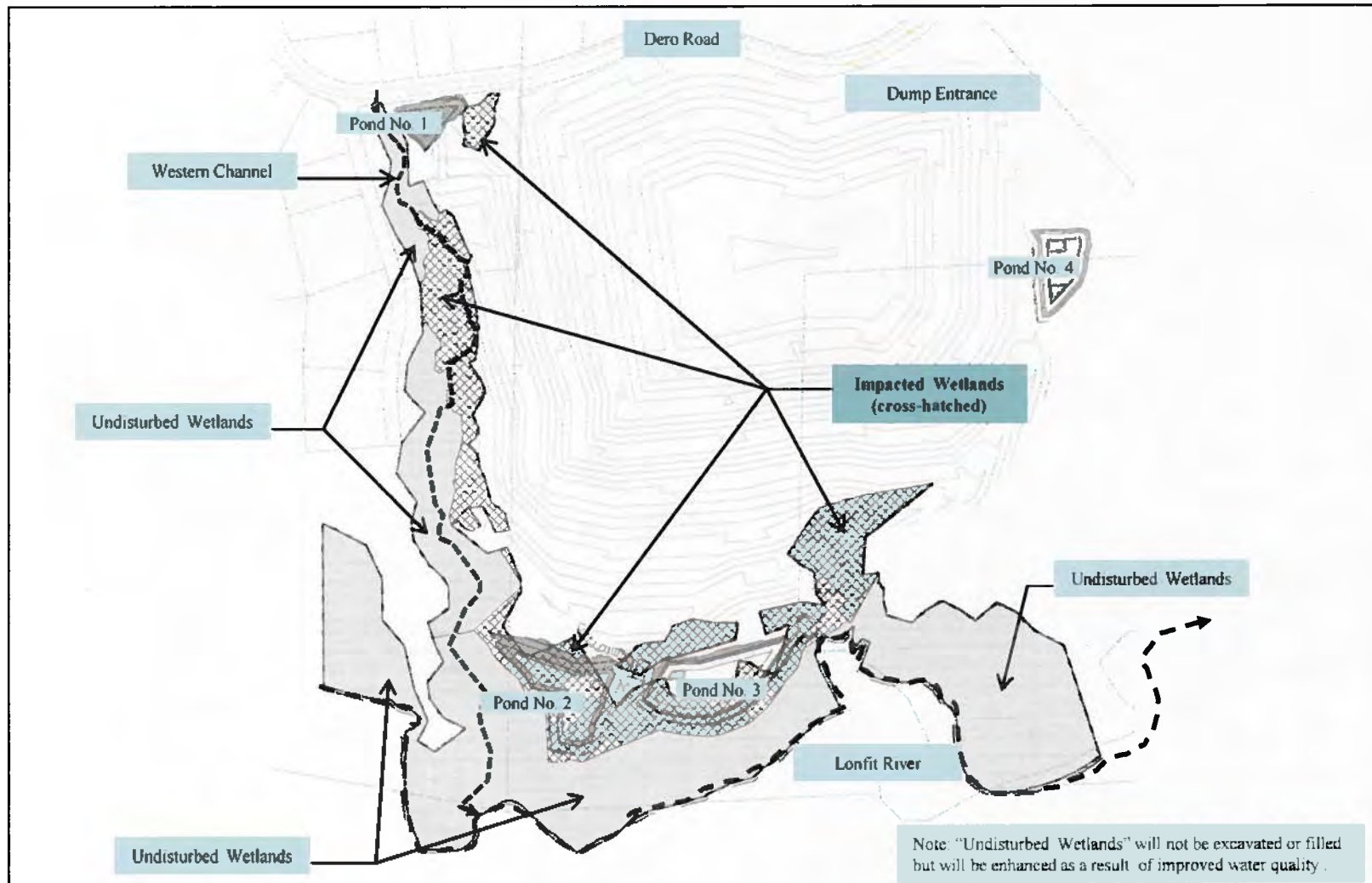
**Site Vicinity Map
Ordot Dump Closure Construction**

ARC Environmental Services Inc.

Date
April 2013

Figure No.
2



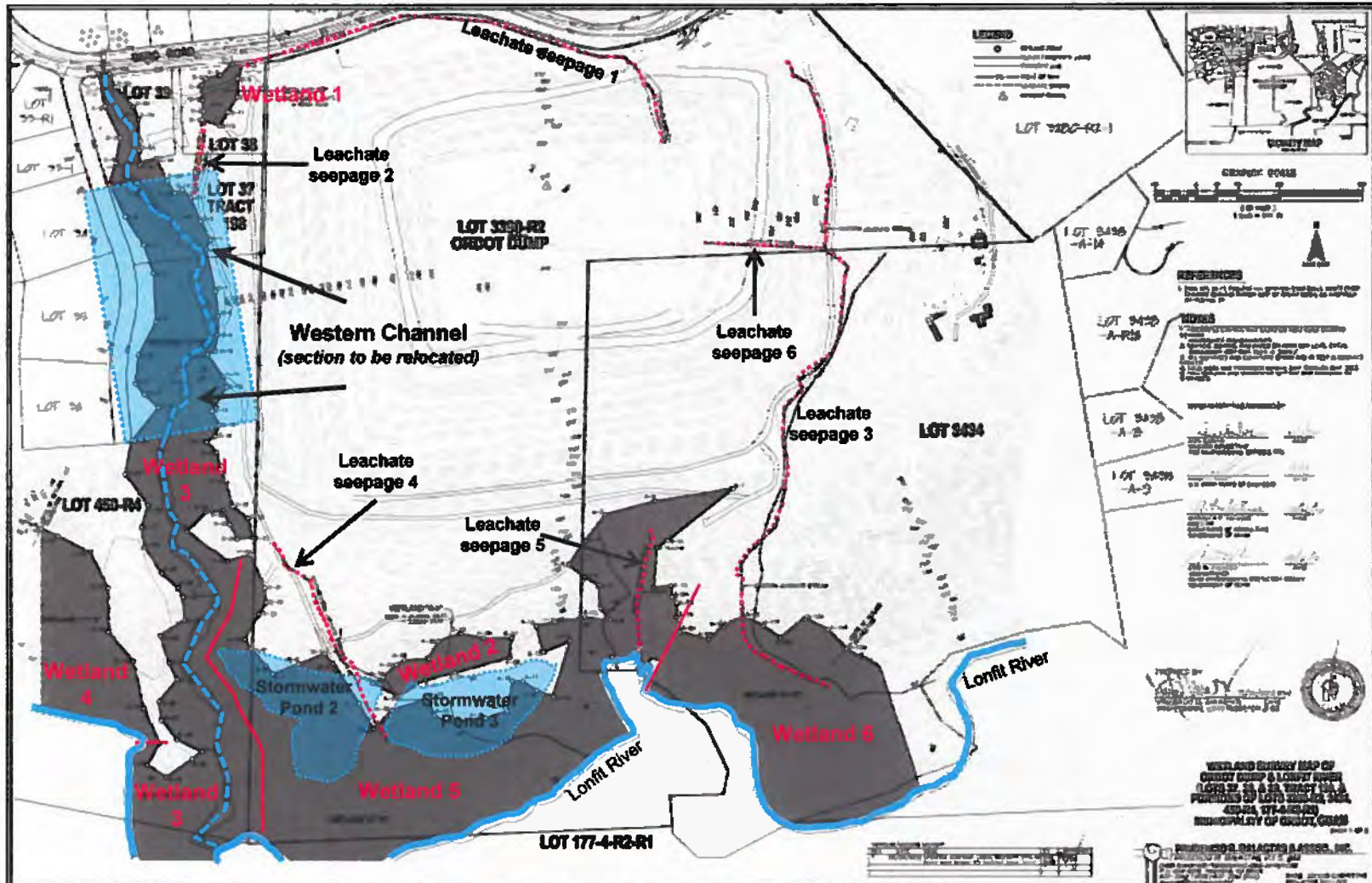


**Impacted Wetlands (Temporary and Permanent)
Ordot Dump Closure Construction**

ARC Environmental Services Inc.

Date
April 2013

Figure No.
4



Generalized Key Diagram
Wetland Impacts Matrix (Table 1)
Ordot Dump Closure Construction
ARC Environmental Services Inc.

Date
April 2013

Figure No.
5

ORDOT DUMP CLOSURE CONSTRUCTION

PREPARED FOR:



**SOLID WASTE
MANAGEMENT
CONSULTANTS**

RECEIVER FOR:

GUAM SOLID WASTE AUTHORITY

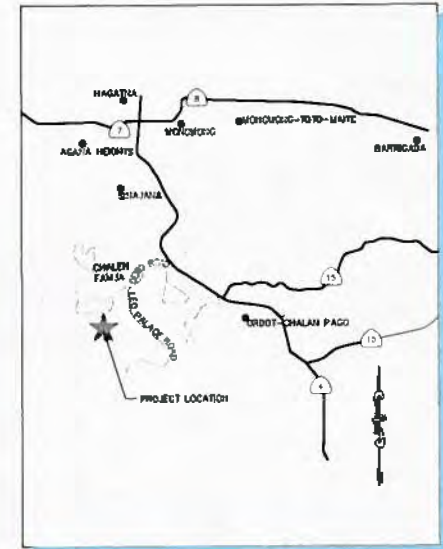
PREPARED BY:

**Brown AND
Caldwell**

**Geo-Logic
ASSOCIATES**



TERRITORY OF GUAM (NTS)



REGIONAL MAP (NTS)

DRAWING INDEX

DRAWING NUMBER	TITLE AND DESCRIPTION	LATEST REVISION NUMBER	LATEST REVISION DATE	DRAWING NUMBER	TITLE AND DESCRIPTION	LATEST REVISION NUMBER	LATEST REVISION DATE	DRAWING NUMBER	TITLE AND DESCRIPTION	LATEST REVISION NUMBER	LATEST REVISION DATE	DRAWING NUMBER	TITLE AND DESCRIPTION	LATEST REVISION NUMBER	LATEST REVISION DATE
GENERAL				C12	PHASE 1 TOP OF FINAL COVER PLAN	A	3/4/13	C33	STORMWATER POND 3 PLAN VIEW	A	3/4/13	C82	SECURITY FENCING CONSTRUCTION DETAILS	A	3/4/13
G01	TITLE PAGE	A	3/4/13	C13	PHASE 1 LANDFILL GAS COLLECTION SYSTEM LAYOUT	A	3/4/13	C34	STORMWATER POND 4 PLAN VIEW	A	3/4/13	C83-C84	RESERVED		
G02	NOTES	A	3/4/13	C14	PHASE 1 STORMWATER COLLECTION PLAN	A	3/4/13	C35	STORMWATER POND 1 SECTIONS	A	3/4/13	C85	CHANNEL RELOCATION TYPICAL SECTIONS	A	3/4/13
G03	LEGEND, SYMBOLS, & ABBREVIATIONS	A	3/4/13	C15	CHANNEL RELOCATION CLEARING AND STAGING PLAN	A	3/4/13	C36	STORMWATER POND 2 SECTIONS	A	3/4/13	C86	CHANNEL RELOCATION STREAM CONSTRUCTION DETAILS	A	3/4/13
G04	SITE PLAN & EXISTING CONDITIONS	A	3/4/13	C16	CHANNEL RELOCATION PHASE-1 PLAN AND PROFILE	A	3/4/13	C37	STORMWATER POND 3 SECTIONS	A	3/4/13	C87	CHANNEL RELOCATION STREAM CONSTRUCTION DETAILS-2	A	3/4/13
G05	SITE PLAN & EXISTING CONDITIONS	A	3/4/13	C17	CHANNEL RELOCATION FINAL PLAN AND PROFILE	A	3/4/13	C38	STORMWATER POND 4 SECTIONS	A	3/4/13	C88	CHANNEL RELOCATION PLANTING DETAILS	A	3/4/13
G06	FINAL CLOSURE CONFIGURATION	A	3/4/13	C18	CHANNEL RELOCATION PLANTING PLAN	A	3/4/13	C39	RESERVED			C89	RESERVED		
G07	WETLANDS SURVEY MAP	A	3/4/13	C19	CHANNEL RELOCATION FINAL PLAN AND PROFILE	A	3/4/13	C40-C41	RESERVED			C90	RESERVED		
G08	WETLANDS SURVEY MAP	A	3/4/13	C20	PHASE 2 TOP OF FOUNDATION	A	3/4/13	C42	LEACHATE STORAGE SYSTEM PLAN	A	3/4/13	C91	RESERVED		
G09	OVERALL EROSION CONTROL PLAN	A	3/4/13	C21	PHASE 2 PERIMETER LEACHATE COLLECTION TRENCH PROFILE	A	3/4/13	C43-C44	RESERVED			C92	RESERVED		
G10	CHANNEL RELOCATION EROSION CONTROL PLAN	A	3/4/13	C22	PHASE 2 PERIMETER LEACHATE COLLECTION TRENCH PROFILE	A	3/4/13	C45	LEACHATE STORAGE SYSTEM DETAILS	A	3/4/13	C93	RESERVED		
G11	EROSION CONTROL DETAILS	A	3/4/13	C23	PHASE 2 TOP OF FOUNDATION	A	3/4/13	C46	LEACHATE FORCEMAIN DETAILS	A	3/4/13	C94	RESERVED		
ENV.				C24	PHASE 2 TOP OF FOUNDATION	A	3/4/13	C47	LEACHATE FORCEMAIN PLAN AND PROFILE	A	3/4/13	C95	RESERVED		
E01	LEACHATE INTERCEPTION TRENCH AND WASTE RELOCATION SITE PLAN	A	3/4/13	C25	PHASE 2 TOP OF FOUNDATION	A	3/4/13	C48	LEACHATE FORCEMAIN PLAN AND PROFILE	A	3/4/13	C96	RESERVED		
E02	WASTE RELOCATION INTERCEPTION TRENCH AND WASTE RELOCATION PLAN	A	3/4/13	C26	PHASE 2 TOP OF FOUNDATION	A	3/4/13	C49	LEACHATE FORCEMAIN PLAN AND PROFILE	A	3/4/13	C97	RESERVED		
E03	ELECTRICAL SWITCHBOARD ELEVATION	A	3/4/13	C27	PHASE 2 TOP OF FOUNDATION	A	3/4/13	C50	FINAL COVER SYSTEM DETAILS	A	3/4/13	C98	RESERVED		
E04	ELECTRICAL PARTIAL SITE PLANS	A	3/4/13	C28	PHASE 2 TOP OF FOUNDATION	A	3/4/13	C51	FINAL COVER SYSTEM DETAILS	A	3/4/13	C99	RESERVED		
E05	ELECTRICAL DETAILS	A	3/4/13	C29	PHASE 2 TOP OF FOUNDATION	A	3/4/13	C52	LEACHATE COLLECTION SYSTEM DETAILS	A	3/4/13	C100	RESERVED		
				C30	PHASE 2 TOP OF FOUNDATION	A	3/4/13	C53	LEACHATE COLLECTION SYSTEM DETAILS	A	3/4/13				
				C31	PHASE 2 TOP OF FOUNDATION	A	3/4/13	C54	LEACHATE INTERCEPTION TRENCH DETAILS	A	3/4/13				
				C32	PHASE 2 TOP OF FOUNDATION	A	3/4/13	C55	INTERMEDIATE BENCH CONSTRUCTION DETAILS	A	3/4/13				
								C56	INTERMEDIATE BENCH AT CORNER CONSTRUCTION DETAILS	A	3/4/13				
								C57	TOP ROCK CONSTRUCTION DETAILS	A	3/4/13				
								C58	INTERMEDIATE BENCH CONSTRUCTION DETAILS	A	3/4/13				
								C59	SECURITY FENCING CONSTRUCTION DETAILS	A	3/4/13				
								C60	RESERVED						
								C61	RESERVED						
								C62	RESERVED						
								C63	RESERVED						
								C64	RESERVED						
								C65	RESERVED						
								C66	RESERVED						
								C67	RESERVED						
								C68	RESERVED						
								C69	RESERVED						
								C70	RESERVED						
								C71	RESERVED						
								C72	RESERVED						
								C73	RESERVED						
								C74	RESERVED						
								C75	RESERVED						
								C76	RESERVED						
								C77	RESERVED						
								C78	RESERVED						
								C79	RESERVED						
								C80	RESERVED						
								C81	RESERVED						
								C82	RESERVED						
								C83	RESERVED						
								C84	RESERVED						
								C85	RESERVED						
								C86	RESERVED						
								C87	RESERVED						
								C88	RESERVED						
								C89	RESERVED						
								C90	RESERVED						

REVISION	
NO.	DATE
A	3/4/13

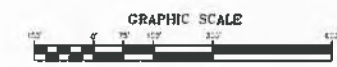
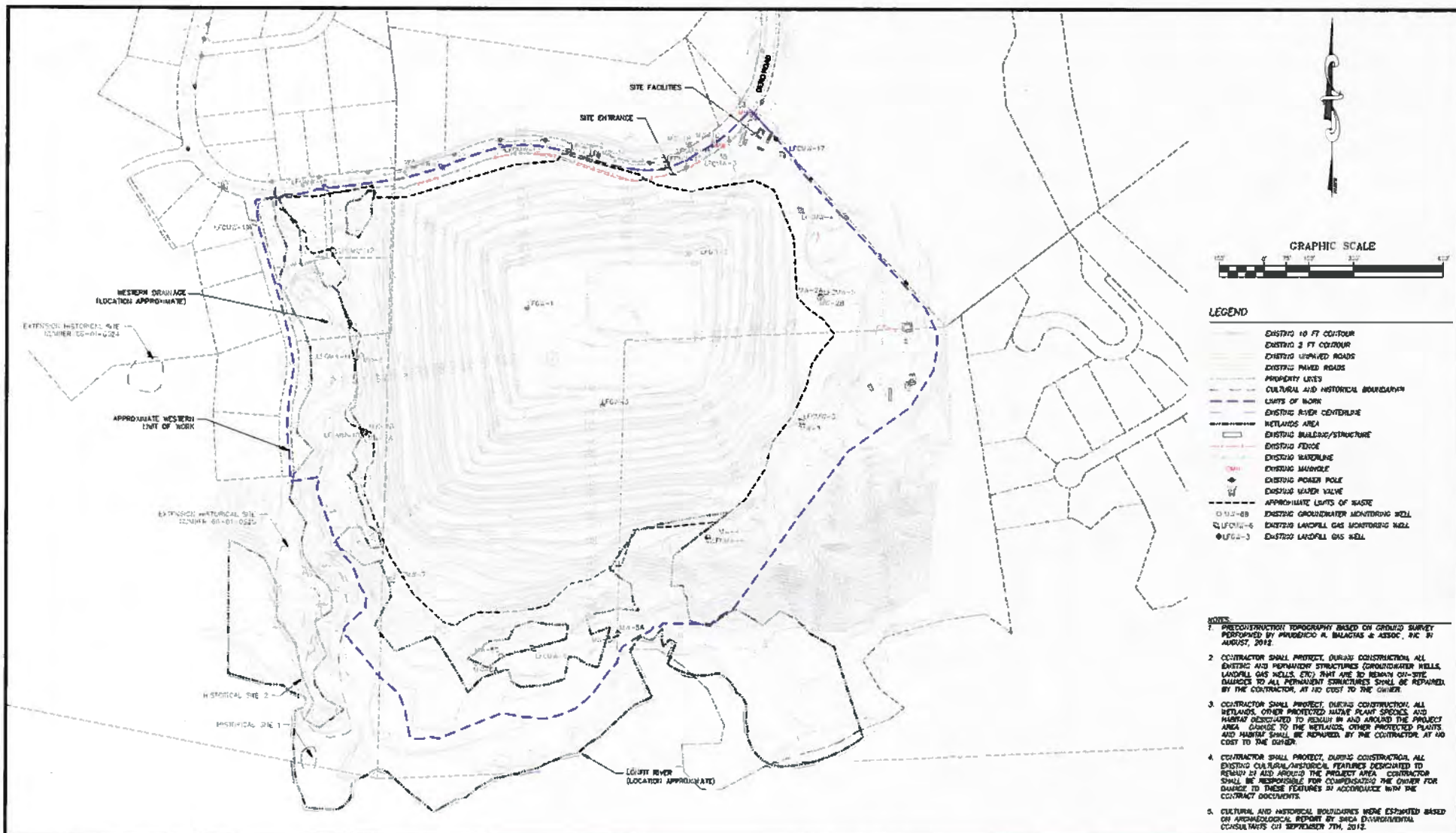


GUAM

DESIGN	DATE	3/4/13
CHECKED	SCALE	AS SHOWN
RECOMMENDED	DATE	BCA
APPROVED	DATE	BCA

TERRITORY	PROJECT NAME	DWG. NO.	SHEET
GUAM	ORDOT DUMP CLOSURE CONSTRUCTION	G01	OF
	TITLE PAGE		
PROJECT NO.	2011.A057	CAD FILE TITLE	PG.dwg

ISSUED FOR 90% REVIEW



- LEGEND**
- EXISTING 10 FT CONTOUR
 - EXISTING 5 FT CONTOUR
 - EXISTING UNPAVED ROADS
 - EXISTING PAVED ROADS
 - PROPERTY LINES
 - CULTURAL AND HISTORICAL BOUNDARIES
 - LIMITS OF WORK
 - EXISTING RIVER CENTERLINE
 - WETLANDS AREA
 - EXISTING BUILDING/STRUCTURE
 - EXISTING FENCE
 - EXISTING WATERLINE
 - EXISTING MANHOLE
 - EXISTING POWER POLE
 - EXISTING WATER VALVE
 - APPROXIMATE LIMITS OF WASTE
 - M-08 EXISTING GROUNDWATER MONITORING WELL
 - LFC-6 EXISTING LANDFILL GAS MONITORING WELL
 - LFC-3 EXISTING LANDFILL GAS WELL

- NOTES**
1. PRECONSTRUCTION TOPOGRAPHY BASED ON GROUND SURVEY PERFORMED BY RUBENICO R. BALAGUAS & ASSOC., INC. IN AUGUST, 2012.
 2. CONTRACTOR SHALL PROTECT, DURING CONSTRUCTION, ALL EXISTING AND PERMANENT STRUCTURES (GROUNDWATER WELLS, LANDFILL GAS WELLS, ETC.) THAT ARE TO REMAIN ON-SITE. DAMAGES TO ALL PERMANENT STRUCTURES SHALL BE REPAIRED BY THE CONTRACTOR, AT NO COST TO THE OWNER.
 3. CONTRACTOR SHALL PROTECT, DURING CONSTRUCTION, ALL WETLANDS, OTHER PROTECTED PLANT SPECIES, AND HABITAT DESIGNATED TO REMAIN IN AND AROUND THE PROJECT AREA. DAMAGE TO THE WETLANDS, OTHER PROTECTED PLANTS AND HABITAT SHALL BE REPAIRED BY THE CONTRACTOR, AT NO COST TO THE OWNER.
 4. CONTRACTOR SHALL PROTECT, DURING CONSTRUCTION, ALL EXISTING CULTURAL/HISTORICAL FEATURES DESIGNATED TO REMAIN IN AND AROUND THE PROJECT AREA. CONTRACTOR SHALL BE RESPONSIBLE FOR COMPENSATING THE OWNER FOR DAMAGE TO THESE FEATURES IN ACCORDANCE WITH THE CONTRACT DOCUMENTS.
 5. CULTURAL AND HISTORICAL BOUNDARIES WERE ESTABLISHED BASED ON ARCHAEOLOGICAL REPORT BY SAGA ENVIRONMENTAL CONSULTANTS ON SEPTEMBER 27TH, 2012.

Geo-Logic ASSOCIATES

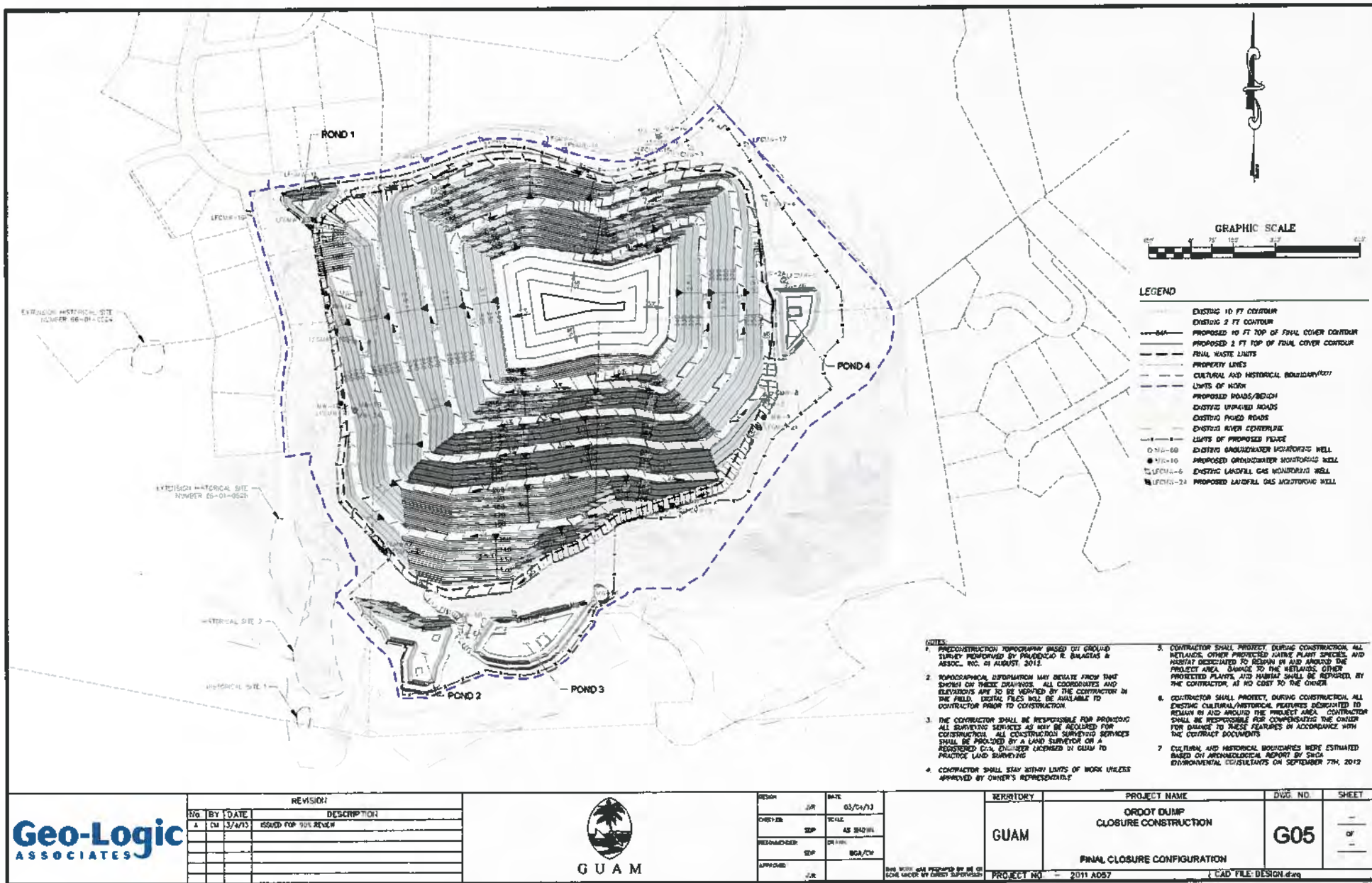
REVISION		
NO.	BY	DATE
A	CP	3/4/13
		ISSUED FOR 80% REVIEW

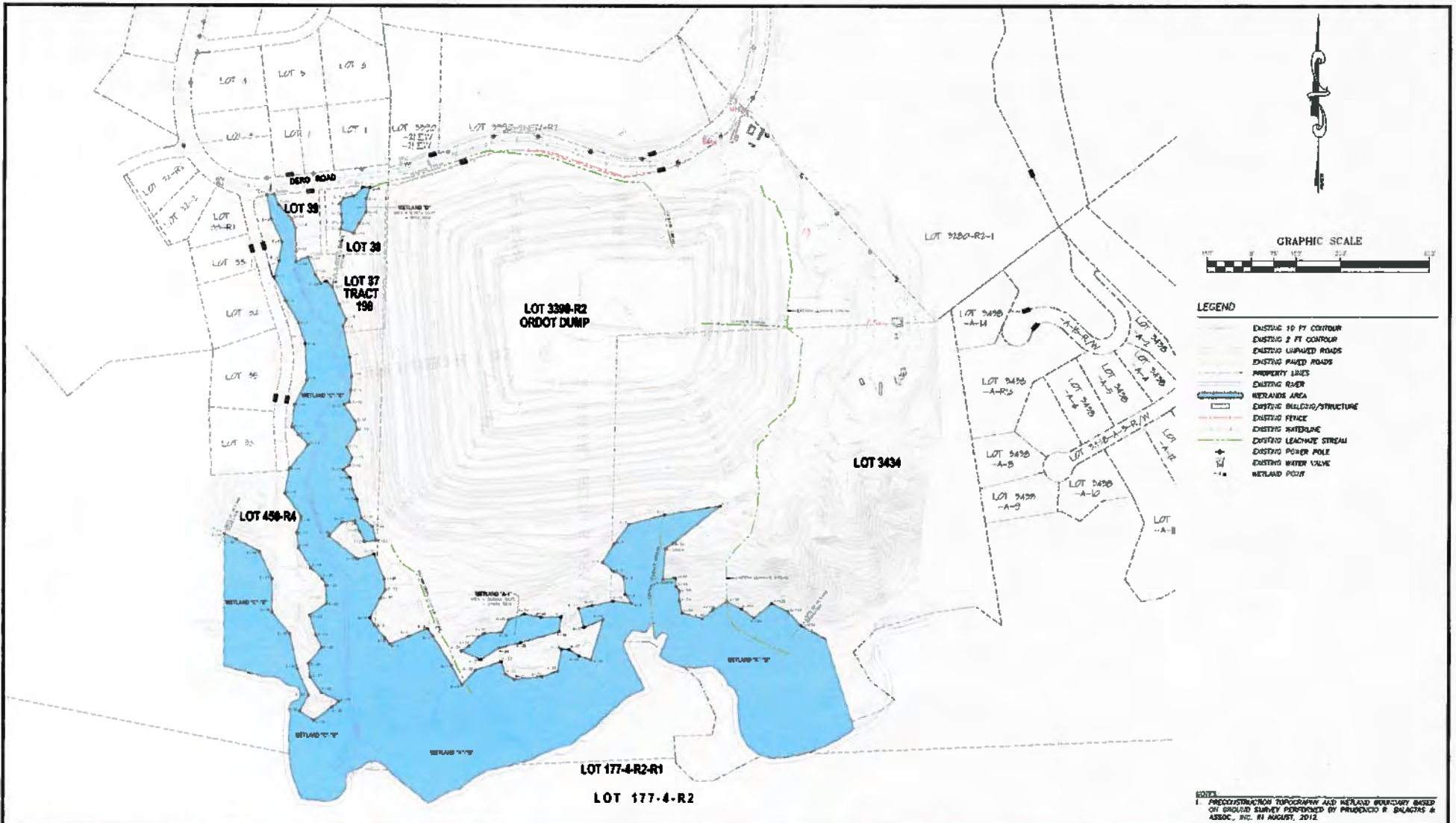


DESIGN	J.R.	03/04/13
CHECKED	SEP	AS SHOWN
RECOMMENDED	SEP	03/04/13
APPROVED	J.R.	

TERRITORY	PROJECT NAME	DWG. NO.	SHEET
GUAM	ORDOT DUMP CLOSURE CONSTRUCTION	G04	1 OF 1
SITE PLAN & EXISTING CONDITIONS			
PROJECT NO.	2011.A057		DATE FILE: DESIGN.dwg

ISSUED FOR 80% REVIEW





REVISION			
NO	BY	DATE	DESCRIPTION
1	DM	3/4/13	ISSUED FOR 80% REVIEW

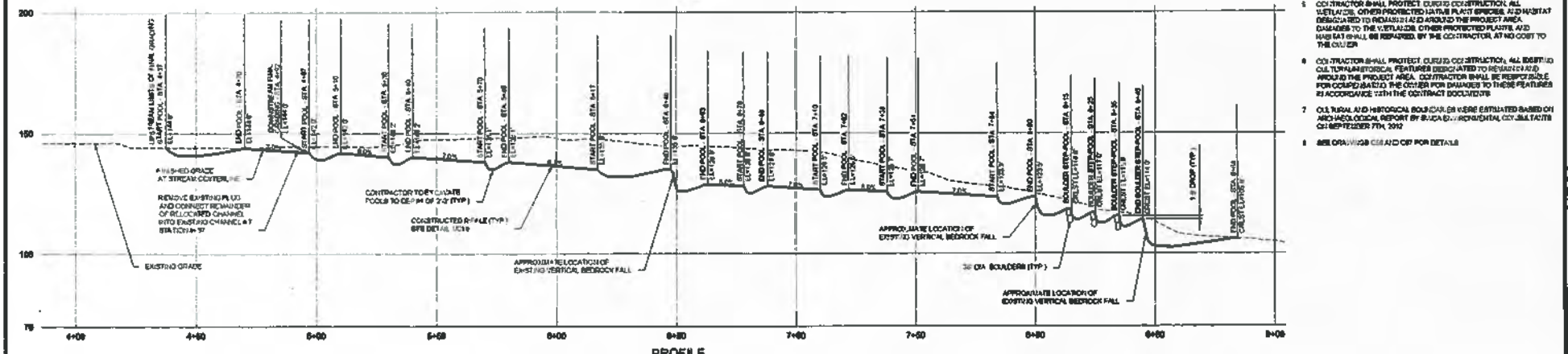
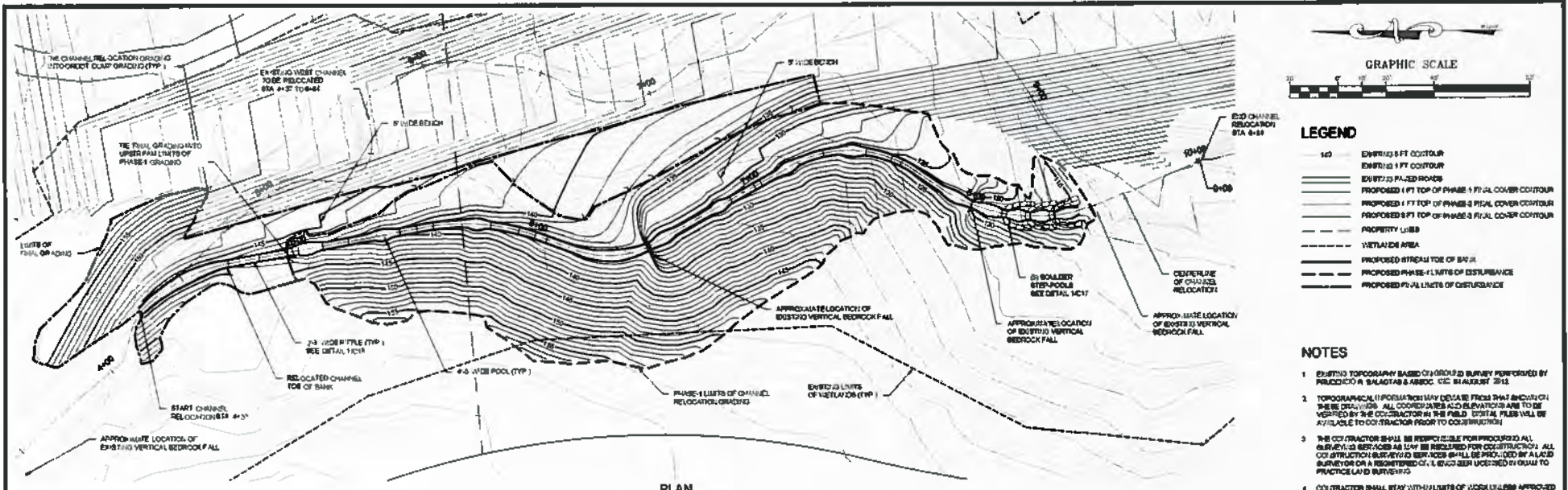


DESIGNER:	DIL	DATE:	03/04/13
DRAWN:	J.P	SCALE:	AS SHOWN
RECOMMENDED:	J.P	TR. BY:	MC
APPROVED:	DIL		

TERRITORY:	GUAM	PROJECT NAME:	ORDOT DUMP CLOSURE CONSTRUCTION	DWG. NO.:	G06	SHEET:	1 OF 1
			WETLANDS SURVEY MAP				
PROJECT NO.:	2011.A057	CAD FILE:	DESIGN.dwg				

Brown AND Caldwell

ISSUED FOR 80% REVIEW



LEGEND

100	EXISTING 5 FT CONTOUR
100	EXISTING 1 FT CONTOUR
---	EXISTING PAVED ROADS
---	PROPOSED 1 FT TOP OF PHASE 1 FINAL COVER CONTOUR
---	PROPOSED 1 FT TOP OF PHASE 2 FINAL COVER CONTOUR
---	PROPOSED 5 FT TOP OF PHASE 3 FINAL COVER CONTOUR
---	PROPERTY LINES
---	100' WIDE AREA
---	PROPOSED STRAIGHT TOP OF BERM
---	PROPOSED PHASE 1 LIMITS OF DISTURBANCE
---	PROPOSED PHASE 2 LIMITS OF DISTURBANCE

- NOTES**
- EXISTING TOPOGRAPHY BASED ON 2005 SURVEY PERFORMED BY PRUDICHO R. SHAGHTAS & ASSOC. LLC. STA. LIST: 2112.
 - TOPOGRAPHICAL INFORMATION MAY BE AVAILABLE FROM THE BUREAU OF THE DISTRICT. ALL COORDINATES AND ELEVATIONS ARE TO BE VERIFIED BY THE CONTRACTOR IN THE FIELD. COORDINATES SHALL BE AVAILABLE TO CONTRACTOR PRIOR TO CONSTRUCTION.
 - THE CONTRACTOR SHALL BE RESPONSIBLE FOR PROVIDING ALL SURVEY SERVICES AS MAY BE REQUIRED FOR CONSTRUCTION. ALL CONSTRUCTION SURVEY SERVICES SHALL BE PROVIDED BY A LICENSED SURVEYOR OR A REGISTERED CIVIL ENGINEER UNDER THE SUPERVISION OF A LICENSED SURVEYOR.
 - CONTRACTOR SHALL STAY WITHIN LIMITS OF WORK UNLESS APPROVED BY OWNER'S REPRESENTATIVE.
 - CONTRACTOR SHALL PROTECT EXISTING CONSTRUCTION. ALL UTILITIES OTHER THAN PROTECTED PLANT SPECIES, AS IDENTIFIED BY THE DISTRICT, SHALL BE PROTECTED AND MAINTAINED THROUGHOUT THE PROJECT AREA. CONTRACTOR SHALL BE RESPONSIBLE FOR PROTECTING AND MAINTAINING THESE UTILITIES THROUGHOUT THE PROJECT AREA. CONTRACTOR SHALL BE RESPONSIBLE FOR REPAIRING AND REPLACING UTILITIES DAMAGED TO THESE UTILITIES IN ACCORDANCE WITH THE CONTRACT DOCUMENTS.
 - CULTURAL AND HISTORICAL SOURCES ON WHICH ESTIMATES BASED ON AN ARCHAEOLOGICAL REPORT BY SUECO ENVIRONMENTAL CONSULTANTS ON SEPTEMBER 7TH, 2012.
 - SEE DRAWING C17 FOR DETAILS.



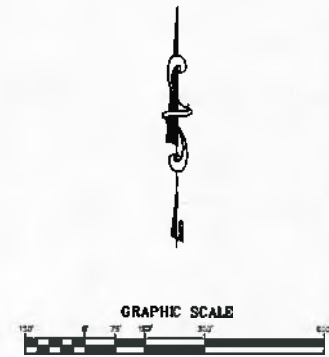
NO.	BY	DATE	REVISION DESCRIPTION



PROJECT NO.	DATE
DESIGNED BY	SCALE
CHECKED BY	1"=20'
PREPARED BY	DATE
APPROVED BY	BY

TERRITORY	PROJECT NAME	DWG. NO.	SHEET
GUAM	OROOT DUMP CLOSURE CONSTRUCTION CHANNEL RELOCATION FINAL PLAN AND PROFILE	C17	20 OF XX
PROJECT NO.	GSWA-12-0X	CAD FILE	ISSUED FOR 90% REVIEW

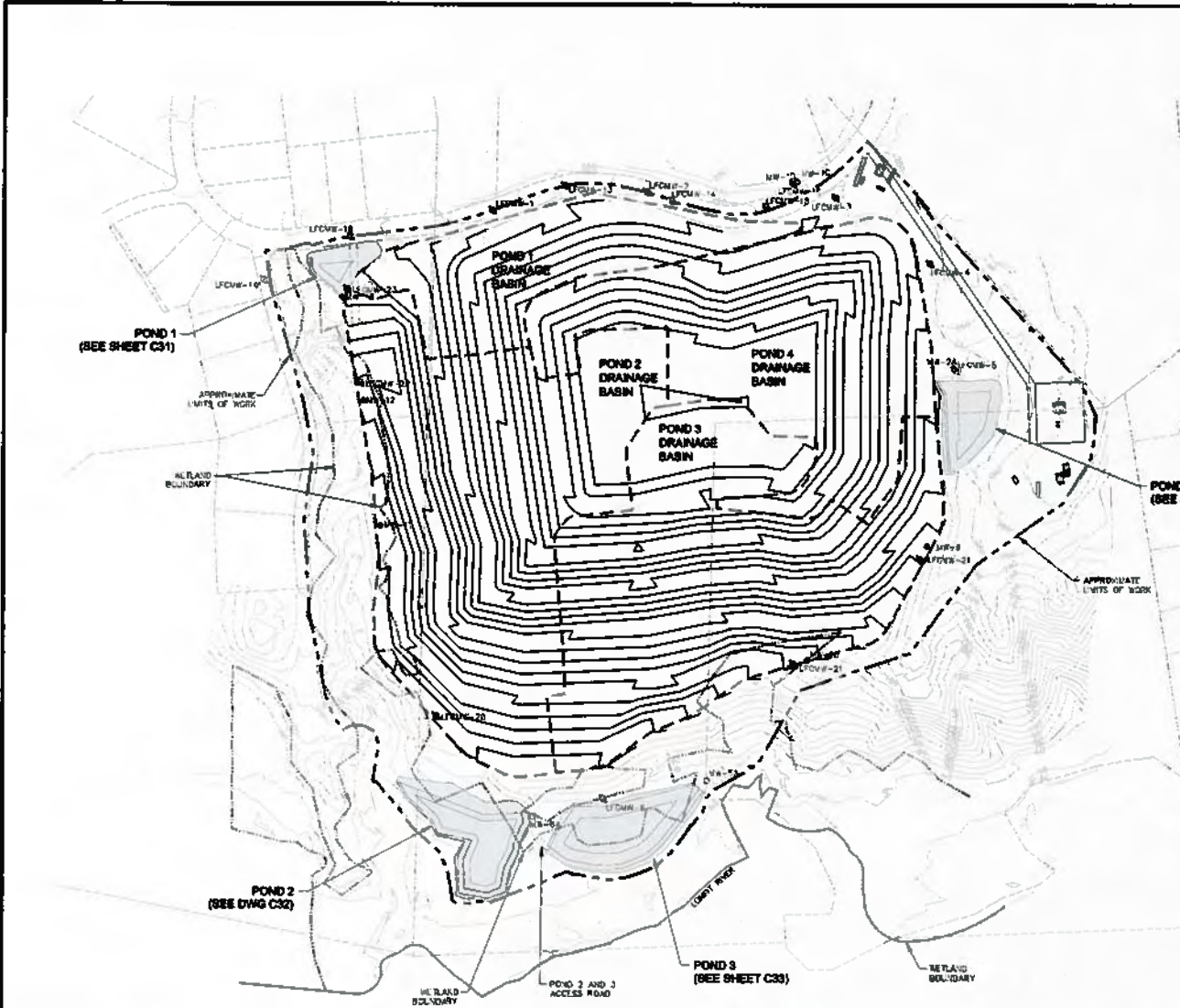
DRAINAGE BASIN	AREA (AC)	POND CAPACITY (CF)
1	4.00	42,000
2	16.84	181,004
3	14.16	167,000
4	16.85	180,482




LEGEND

- EXISTING 10 FT CONTOUR
- EXISTING 2 FT CONTOUR
- PROPOSED 10 FT TOP OF FOUNDATION LAYER CONTOUR
- PROPOSED 2 FT TOP OF FOUNDATION LAYER CONTOUR
- PROPERTY LINES
- CULTURAL AND HISTORICAL BOUNDARIES
- LIMITS OF WORK
- PROPOSED ROADS/BIWAYS
- EXISTING UNPAVED ROADS
- EXISTING PAVED ROADS
- EXISTING BUILDING/STRUCTURE
- EXISTING FENCE
- WETLANDS AREA
- NW-60 GROUNDWATER MONITORING WELL
- NE/FW-6 LATEFALL GWT MONITORING WELL
- W/FW-3 LATEFALL GWT WELL


- NOTES:**
- EXISTING TOPOGRAPHY BASED ON GROUND SURVEY PERFORMED BY PRUDENCIO R. SOLORZANO & ASSOC., INC. IN AUGUST, 2012.
 - TOPOGRAPHICAL INFORMATION MAY DEVIATE FROM THAT SHOWN ON THESE DRAWINGS. ALL DIMENSIONS AND ELEVATIONS ARE TO BE VERIFIED BY THE CONTRACTOR IN THE FIELD. ORIGINAL FILES WILL BE AVAILABLE TO CONTRACTOR PRIOR TO CONSTRUCTION.
 - THE CONTRACTOR SHALL BE RESPONSIBLE FOR PROTECTING ALL SURVEYING SERVICES AS MAY BE REQUIRED FOR CONSTRUCTION. ALL CONSTRUCTION SURVEYED SERVICES SHALL BE PROVIDED BY A REGISTERED LAND SURVEYOR LICENSED IN GUAM TO PRACTICE LAND SURVEYING.
 - CONTRACTOR SHALL STAY WITHIN LIMITS OF WORK UNLESS APPROVED BY OWNER'S REPRESENTATIVE. ALSO THE CONTRACTOR HAS DETAILED ALL NECESSARY CONSTRUCTION LIMITS/NOTES.
 - CONTRACTOR SHALL PROTECT, DURING CONSTRUCTION, ALL WETLANDS, OTHER PROTECTED NATIVE PLANT SPECIES, AND HABITAT DESIGNATED TO REMAIN IN AND AROUND THE PROJECT AREA. DAMAGE TO THE WETLANDS, OTHER PROTECTED PLANTS, AND HABITAT SHALL BE REPAIRED BY THE CONTRACTOR, AT HIS COST TO THE OWNER.
 - CONTRACTOR SHALL PROTECT, DURING CONSTRUCTION, ALL EXISTING CULTURAL/HISTORICAL FEATURES DESIGNATED TO REMAIN IN AND AROUND THE PROJECT AREA. CONTRACTOR SHALL BE RESPONSIBLE FOR COMPENSATING THE OWNER FOR DAMAGES TO THESE FEATURES IN ACCORDANCE WITH THE CONTRACT DOCUMENTS.
 - FOR CONSTRUCTION OF POND BERTS SEE SPECIFICATION SECTION 0225 I.C.P. PERMEABILITY 304.



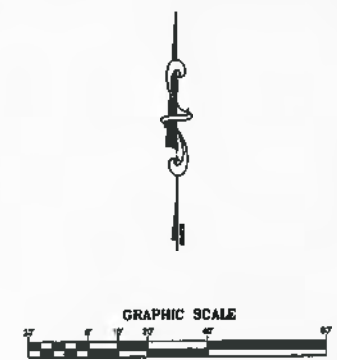
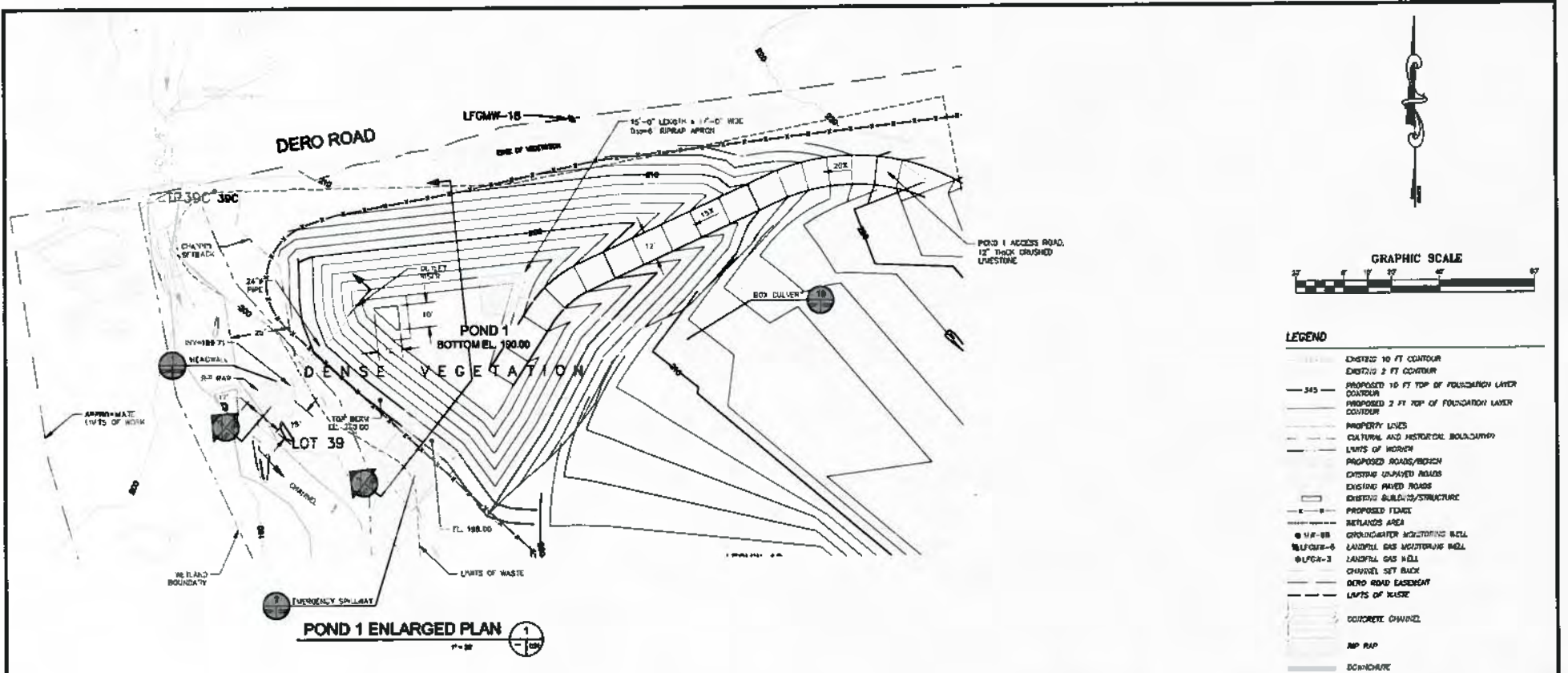
NO.	BY	DATE	REVISION	DESCRIPTION
A	TB	3/4/13	ISSUED FOR 90% REVIEW	



GUAM

DESIGNED BY AS	DATE 3/4/13		PROJECT TERRITORY GUAM	PROJECT NAME ORDOT DUMP CLOSURE CONSTRUCTION	DWG. NO. C30	SHEET OF	
CHECKED BY PB	SCALE AS SHOWN		PROJECT NO. 2011A057	PROJECT LOCATION STORMWATER PONDS LOCATION MAP	CAD FILED 4395-D00-C30.dwg		
RECOMMENDED BY PB	DRAWN BY TB						
APPROVED BY AS							

ISSUED FOR 90% REVIEW



LEGEND

- EXISTING 10 FT CONTOUR
- EXISTING 2 FT CONTOUR
- 345 --- PROPOSED 10 FT TOP OF FOUNDATION LAYER CONTOUR
- PROPOSED 2 FT TOP OF FOUNDATION LAYER CONTOUR
- PROPERTY LINES
- CULTURAL AND HISTORICAL BOUNDARY
- LINES OF WORK
- PROPOSED ROADS/ROADS
- EXISTING UNPAVED ROADS
- EXISTING PAVED ROADS
- EXISTING BUILDING/STRUCTURE
- PROPOSED FENCE
- WETLANDS AREA
- M/F-08 GROUNDWATER MONITORING WELL
- M/F-06 LANDFILL GAS MONITORING WELL
- M/F-03 LANDFILL GAS WELL
- CHANNEL SET BACK
- DERO ROAD EASEMENT
- LIMITS OF MUDSPREAD
- CONCRETE CHANNEL
- MP RAP
- BOUNDARY

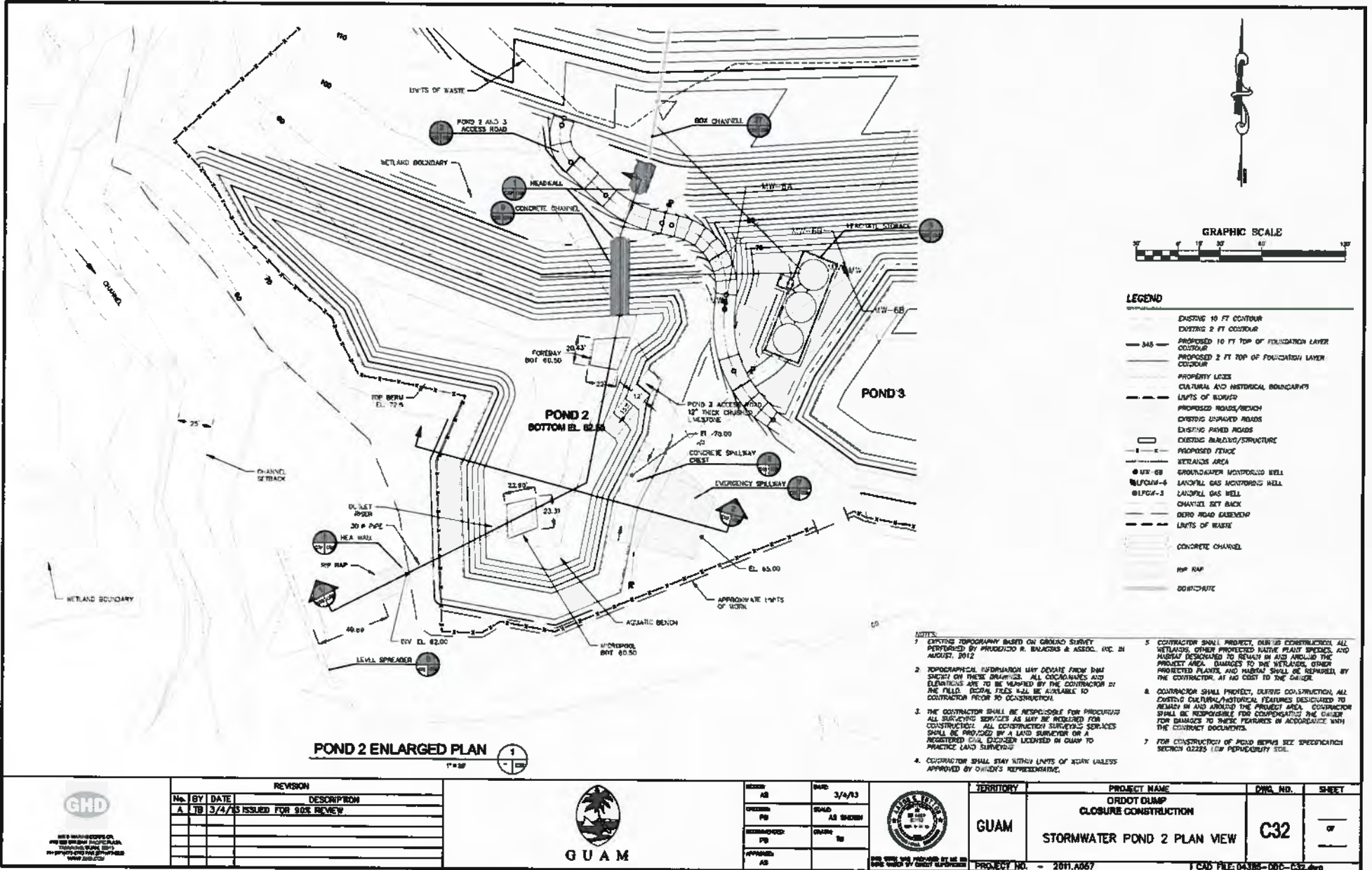
POND 1 ENLARGED PLAN
1" = 30'

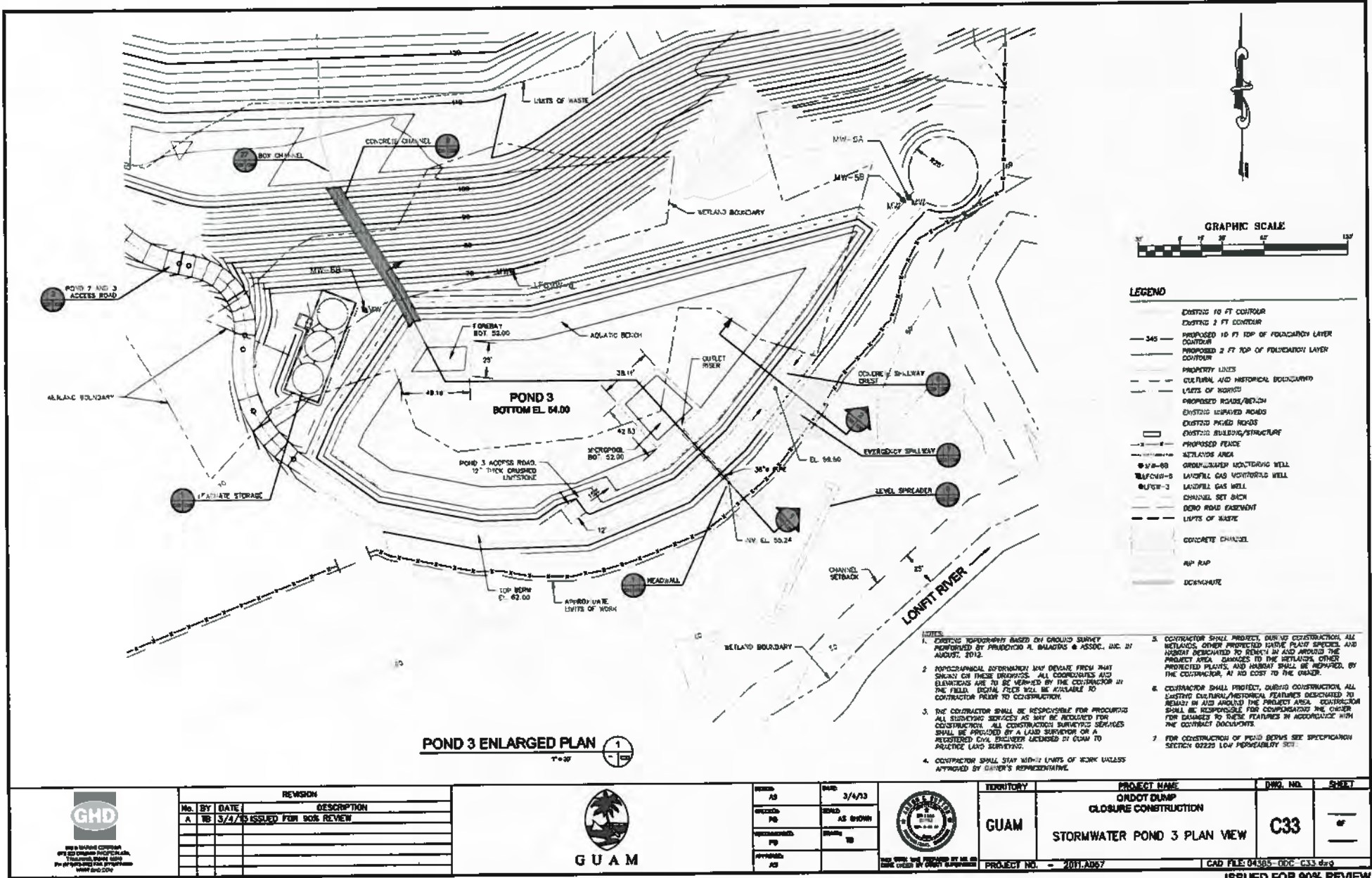
- NOTES:**
- EXISTING TOPOGRAPHY BASED ON GROUND SURVEY PERFORMED BY PROJECTOR R. BALAGUIS & ASSOC., INC. IN AUGUST, 2012.
 - TOPOGRAPHICAL INFORMATION MAY DEVIATE FROM THAT SHOWN ON THESE DRAWINGS. ALL COORDINATES AND ELEVATIONS ARE TO BE VERIFIED BY THE CONTRACTOR IN THE FIELD. ORIGINAL FILES WILL BE AVAILABLE TO CONTRACTOR PRIOR TO CONSTRUCTION.
 - THE CONTRACTOR SHALL BE RESPONSIBLE FOR PROVIDING ALL SURVEYING SERVICES AS MAY BE REQUIRED FOR CONSTRUCTION. ALL CONSTRUCTION SURVEYING SERVICES SHALL BE PROVIDED BY A LAND SURVEYOR OR A REGISTERED CIVIL ENGINEER LICENSED IN GUAM TO PRACTICE LAND SURVEYING.
 - CONTRACTOR SHALL STAY WITHIN LIMITS OF WORK UNLESS APPROVED BY OWNER'S REPRESENTATIVE.
 - CONTRACTOR SHALL PROTECT DURING CONSTRUCTION ALL WETLANDS, OTHER PROTECTED PLANT SPECIES, AND HABITAT DESIGNATED TO REMAIN BY ACD AROUND THE PROJECT AREA. DAMAGES TO THE WETLANDS, OTHER PROTECTED PLANTS, AND HABITAT SHALL BE REPAIRED BY THE CONTRACTOR, AT HIS COST TO THE OWNER.
 - CONTRACTOR SHALL PROTECT DURING CONSTRUCTION ALL EXISTING CULTURAL/HISTORICAL FEATURES DESIGNATED TO REMAIN IN AND AROUND THE PROJECT AREA. CONTRACTOR SHALL BE RESPONSIBLE FOR COMPENSATING THE OWNER FOR DAMAGES TO THESE FEATURES IN ACCORDANCE WITH THE CONTRACT DOCUMENTS.
 - FOR CONSTRUCTION OF POND BERMS SEE SPECIFICATION SECTION 02250 L&P REFERABLEY SEE.

	REVISION				GUAM	PROJECT NAME CRODOT DUMP CLOSURE CONSTRUCTION	DWG. NO. C31	SHEET of
	No.	BY / DATE						
	A	TB 3/4/13	ISSUED FOR 90% REVIEW					

PROJECT NO. - 2011.A057 CAD FILE: 04MS_00C_C31.dwg

ISSUED FOR 90% REVIEW





POND 3 ENLARGED PLAN
 1"=30'

- NOTES**
- EXISTING TOPOGRAPHY BASED ON GROUND SURVEY PERFORMED BY PRINCETON R. BALDWIN & ASSOC., INC. IN AUGUST, 2012.
 - TOPOGRAHICAL INFORMATION MAY DEVIATE FROM THAT SHOWN ON THESE DRAWINGS. ALL COORDINATES AND ELEVATIONS ARE TO BE VERIFIED BY THE CONTRACTOR IN THE FIELD. ORIGINAL FILES WILL BE AVAILABLE TO CONTRACTOR PRIOR TO CONSTRUCTION.
 - THE CONTRACTOR SHALL BE RESPONSIBLE FOR PROVIDING ALL SURVEYING SERVICES AS MAY BE REQUIRED FOR CONSTRUCTION. ALL CONSTRUCTION SURVEYING SERVICES SHALL BE PROVIDED BY A LAND SURVEYOR OR A REGISTERED CIVIL ENGINEER LICENSED IN GUAM TO PRACTICE LAND SURVEYING.
 - CONTRACTOR SHALL STAY WITHIN LIMITS OF WORK UNLESS APPROVED BY OWNER'S REPRESENTATIVE.
 - CONTRACTOR SHALL PROTECT, DURING CONSTRUCTION, ALL WETLANDS, OTHER PROTECTED WATERS PLANT SPECIES, AND WETLAND DESIGNATED TO REMAIN IN AND AROUND THE PROJECT AREA. DAMAGES TO THE WETLANDS, OTHER PROTECTED PLANTS, AND HABITAT SHALL BE REPAIRED, BY THE CONTRACTOR, AT NO COST TO THE OWNER.
 - CONTRACTOR SHALL PROTECT, DURING CONSTRUCTION, ALL EXISTING CULTURAL/HISTORICAL FEATURES DESIGNATED TO REMAIN IN AND AROUND THE PROJECT AREA. CONSTRUCTION SHALL BE RESPONSIBLE FOR COMPENSATING THE OWNER FOR DAMAGES TO THESE FEATURES IN ACCORDANCE WITH THE CONTRACT DOCUMENTS.
 - FOR CONSTRUCTION OF POND BOWNS SEE SPECIFICATION SECTION 02220 LOW FLOORS/SLAB SOI.



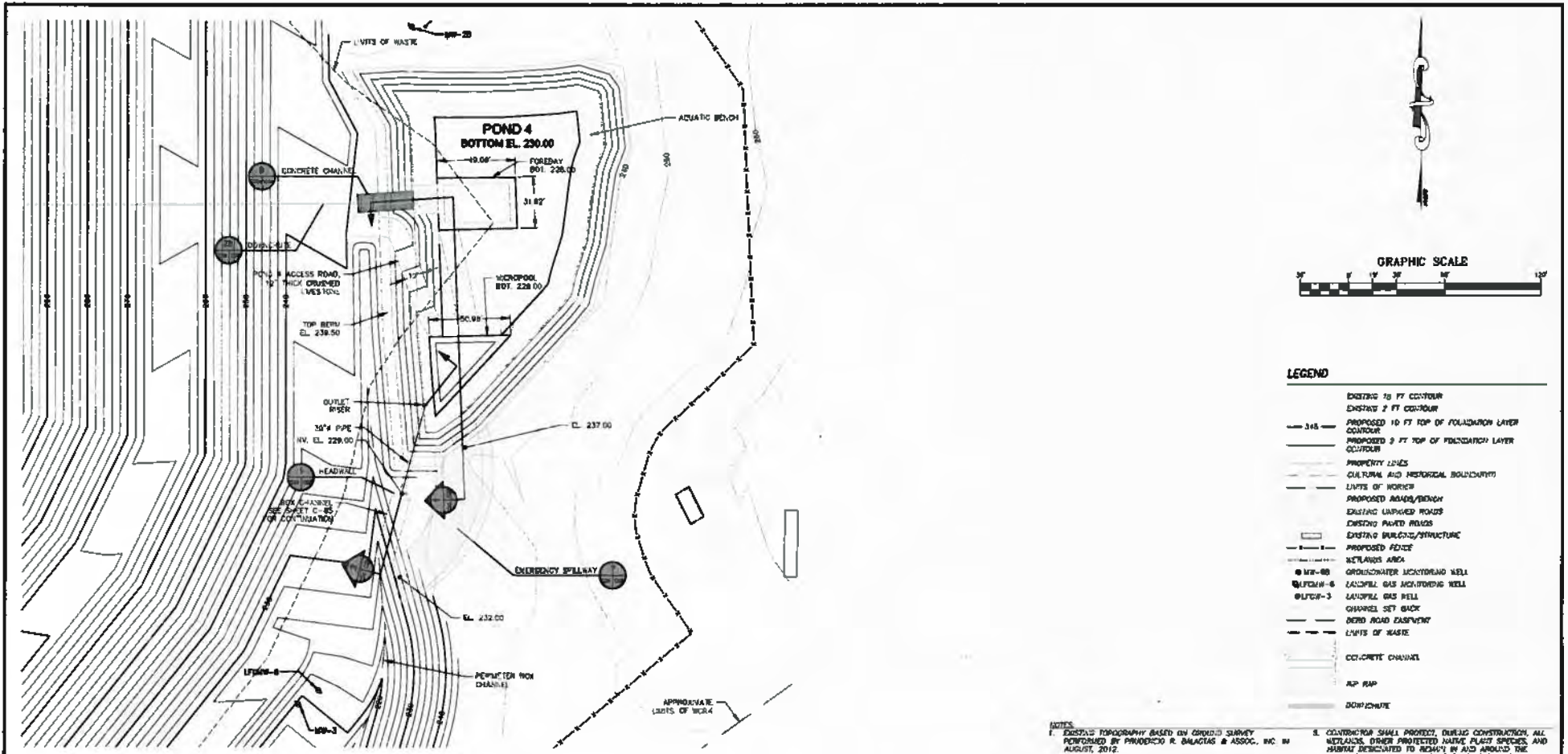
REVISION	
NO.	DATE
A	3/4/13
ISSUED FOR 90% REVIEW	



DESIGN	AS	DATE	3/4/13
DRAWN	AS	DATE	AS SHOWN
CHECKED		DATE	
APPROVED		DATE	



TERRITORY	GUAM	PROJECT NAME	ONDOT DUMP CLOSURE CONSTRUCTION	DWG. NO.	C33	SHEET	
	PROJECT NO.		2011.A067		CAD FILE		04305 - 00C - C33.dwg



POND 4 ENLARGED PLAN
1/11/13



LEGEND

- EXISTING 10 FT CO-TOUR
- EXISTING 2 FT CO-TOUR
- PROPOSED 10 FT TOP OF FOUNDATION LAYER CO-TOUR
- PROPOSED 2 FT TOP OF FOUNDATION LAYER CO-TOUR
- PROPERTY LINES
- CULTURAL AND HISTORICAL BOUNDARY
- LIMITS OF WORK
- PROPOSED ADAMS/BENCH
- EXISTING UNPAVED ROADS
- EXISTING PAVED ROADS
- EXISTING BUILDING/STRUCTURE
- PROPOSED FENCE
- WETLANDS AREA
- MW-05 GROUNDWATER MONITORING WELL
- MW-06 LANDFILL GAS MONITORING WELL
- MW-03 LANDFILL GAS WELL
- OPENING SET BACK
- DRAIN ROAD EQUIPMENT
- LIMITS OF WASTE
- CONCRETE CHANNEL
- ASP PAV
- DIRT/CHUTE

- NOTES:**
- EXISTING TOPOGRAPHY BASED ON GROUND SURVEY PERFORMED BY PRAEDICCO R. DALAGTAS & ASSOC., INC. IN AUGUST, 2012.
 - TOPOGRAPHICAL INFORMATION MAY DEVIATE FROM THAT SHOWN ON THESE DRAWINGS. ALL COORDINATES AND ELEVATIONS ARE TO BE VERIFIED BY THE CONTRACTOR IN THE FIELD. RECORD FILES WILL BE AVAILABLE TO CONTRACTOR PRIOR TO CONSTRUCTION.
 - THE CONTRACTOR SHALL BE RESPONSIBLE FOR PROVIDING ALL SURVEYING SERVICES AS MAY BE REQUIRED FOR CONSTRUCTION. ALL CONSTRUCTION SURVEYING SERVICES SHALL BE PROVIDED BY A LAND SURVEYOR OR A REGISTERED CIVIL ENGINEER LICENSED IN GUAM TO PRACTICE LAND SURVEYING.
 - CONTRACTOR SHALL STAY WITHIN LIMITS OF WORK UNLESS APPROVED BY OWNER'S REPRESENTATIVE.
 - CONTRACTOR SHALL PROTECT, DURING CONSTRUCTION, ALL WETLANDS, OTHER PROTECTED NATIVE PLANT SPECIES, AND HABITAT DESIGNATED TO REMAIN IN AND AROUND THE PROJECT AREA. DAMAGES TO THE WETLANDS, OTHER PROTECTED PLANTS, AND HABITAT SHALL BE REPAIRED BY THE CONTRACTOR, AT HIS OWN COST TO THE OWNER.
 - CONTRACTOR SHALL PROTECT, DURING CONSTRUCTION, ALL EXISTING CULTURAL/HISTORICAL FEATURES DESIGNATED TO REMAIN IN AND AROUND THE PROJECT AREA. CONTRACTOR SHALL BE RESPONSIBLE FOR COMPENSATING THE OWNER FOR DAMAGES TO THESE FEATURES IN ACCORDANCE WITH THE CONTRACT DOCUMENTS.
 - FOR CONSTRUCTION OF POND BEYOND SEE SPECIFICATIONS SECTION 02225 LOW PERMEABILITY SEAL.



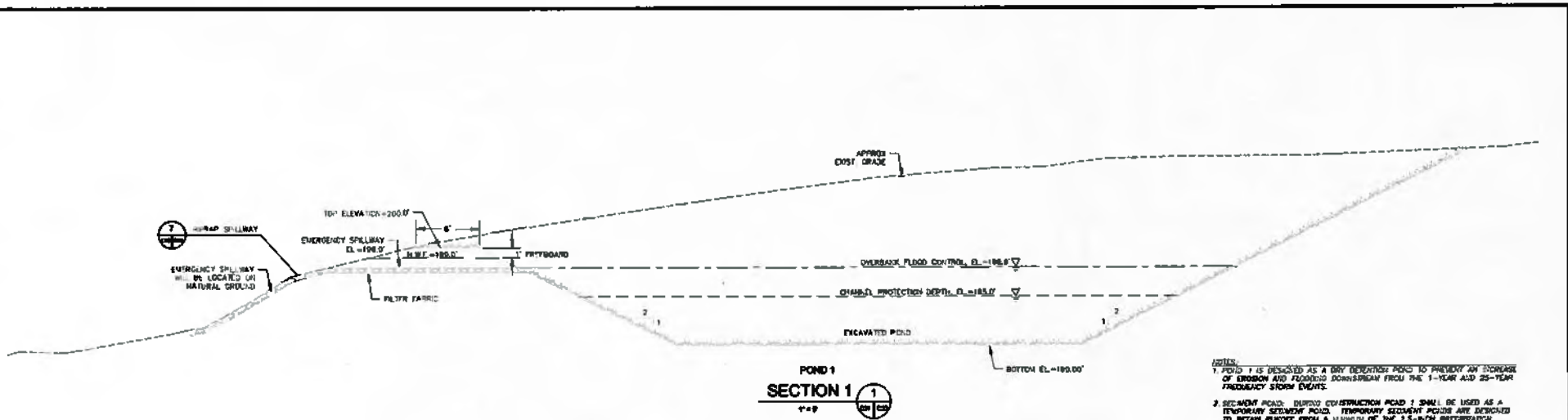
REVISION		
No.	BY	DATE
A	TB	3/4/13
ISSUED FOR 90% REVIEW		



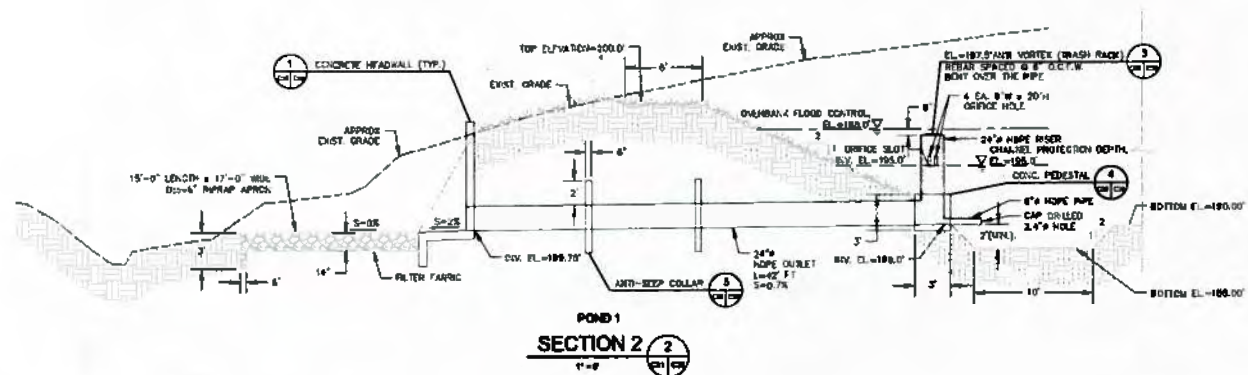
DESIGN	AS	DATE	3/4/13
REVISION	PE	AS SHOWN	
REVISION	FB	TD	
APPROVED	AS		



TERRITORY	GUAM	PROJECT NAME	ROOT DUMP CLOSURE CONSTRUCTION	DWG. NO.	C34	SHEET	of
			STORMWATER POND 4 PLAN VIEW				
PROJECT NO.	2011.0297	CAD FILE:	04385-00C-C34.dwg				

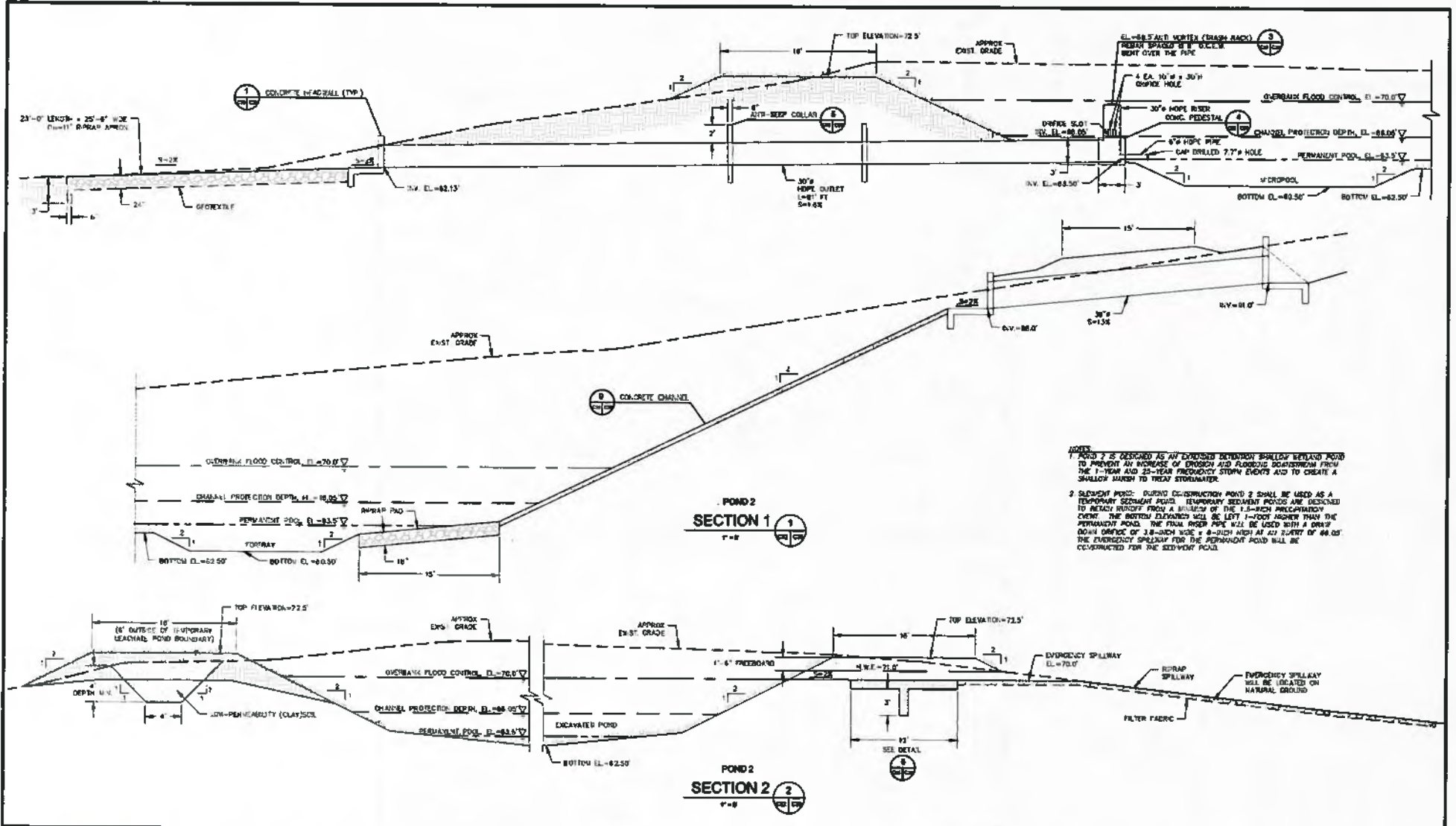


NOTES:
 1. POND 1 IS DESIGNED AS A DRY DETENTION POND TO PREVENT ANY INCREASE OF EROSION AND FLOODING DOWNSTREAM FROM THE 1-YEAR AND 25-YEAR FREQUENCY STORM EVENTS.
 2. SECONDARY POND: DURING CONSTRUCTION POND 1 SHALL BE USED AS A TEMPORARY SEDIMENT POND. TEMPORARY SEDIMENT POUNDS ARE DESIGNED TO RETAIN SEDIMENT FROM A MAXIMUM OF THE 2.5-INCH PRECIPITATION EVENT. THE BOTTOM ELEVATION WILL BE LEFT 1 FOOT HIGHER THAN THE PERMANENT POND. THE FINAL SEDIMENT POND WILL BE USED WITH A DRAIN BODY ORifice OF 2.5-INCH I.D. x 8-INCH HIGH AT AN INLET OF 185.00'. THE EMERGENCY SPILLWAY FOR THE PERMANENT POND WILL BE CONSTRUCTED FOR THE SEDIMENT POND.



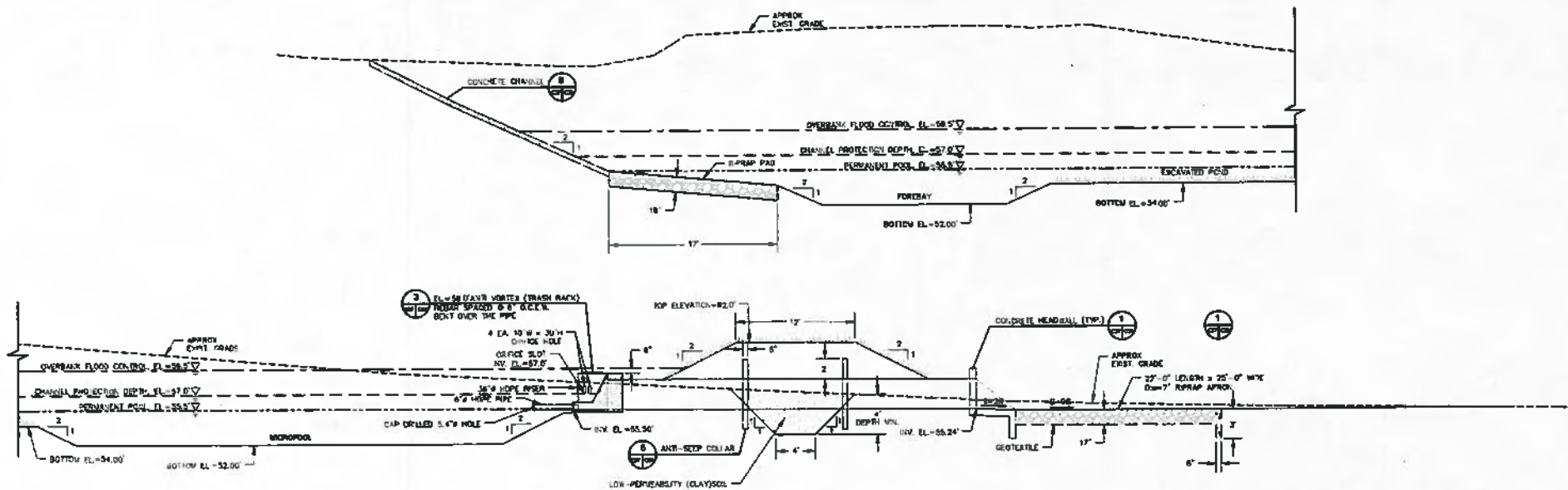
<p>400 W. MARINE CORP. DR. FORT WORTH, TEXAS 76102 PHONE: 817.419.8100 WWW.GHD.COM</p>	REVISION		<p>GUAM</p>	DESIGN	DATE	<p>STATE OF GUAM DEPARTMENT OF PUBLIC WORKS 100 W. MARINE CORP. DR. FORT WORTH, TEXAS 76102 PHONE: 817.419.8100 WWW.GHD.COM</p>	TERMINATION	PROJECT NAME	BND. NO. C35	SHEET OF
	No. BY DATE	DESCRIPTION		AS	3/4/13		GUAM	CRUDOT DUMP CLOSURE CONSTRUCTION		
	A TB 3/4/13	ISSUED FOR 90% REVIEW		DRAWN	AS SHOWN		STORMWATER POND 1 SECTIONS			
				REVISIONS	TO		PROJECT NO.	2011.057		
				APPROVED	AS		CAD FILE: 04386-000-C35.dwg			

ISSUED FOR 90% REVIEW



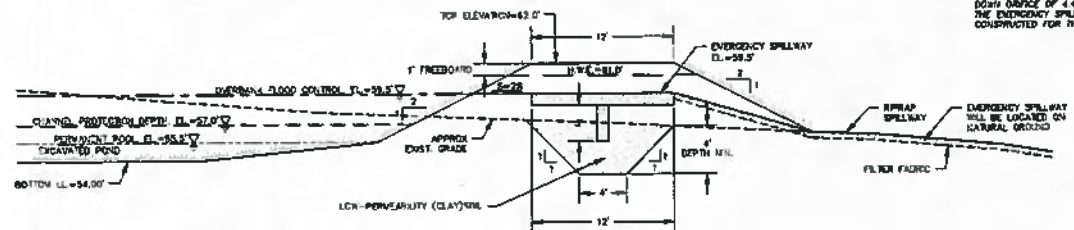
 <small>GHD 1000 North Colorado Suite 1000 Denver, CO 80202 PH: 303.733.0000 WWW.GHD.COM</small>	REVISION		 GUAM	 <small>THE ENGINEER STATE OF GUAM</small>	TERRITORY GUAM	PROJECT NAME ORDOT DUMP CLOSURE CONSTRUCTION	DWG. NO. C36	SHEET OF																									
	<table border="1"> <thead> <tr> <th>NO.</th> <th>BY</th> <th>DATE</th> <th>DESCRIPTION</th> </tr> </thead> <tbody> <tr> <td>A</td> <td>TS</td> <td>3/15/13</td> <td>DESIGN FOR 90% REVIEW</td> </tr> <tr> <td> </td> <td> </td> <td> </td> <td> </td> </tr> <tr> <td> </td> <td> </td> <td> </td> <td> </td> </tr> <tr> <td> </td> <td> </td> <td> </td> <td> </td> </tr> </tbody> </table>	NO.							BY	DATE	DESCRIPTION	A	TS	3/15/13	DESIGN FOR 90% REVIEW													<table border="1"> <thead> <tr> <th>DESIGN NO.</th> <th>DATE</th> </tr> </thead> <tbody> <tr> <td>000000</td> <td>5/4/13</td> </tr> <tr> <td>000000</td> <td>06/26/13</td> </tr> <tr> <td>000000</td> <td>07/01/13</td> </tr> <tr> <td>000000</td> <td> </td> </tr> </tbody> </table>	DESIGN NO.	DATE	000000	5/4/13	000000
NO.	BY	DATE	DESCRIPTION																														
A	TS	3/15/13	DESIGN FOR 90% REVIEW																														
DESIGN NO.	DATE																																
000000	5/4/13																																
000000	06/26/13																																
000000	07/01/13																																
000000																																	

ISSUED FOR 90% REVIEW



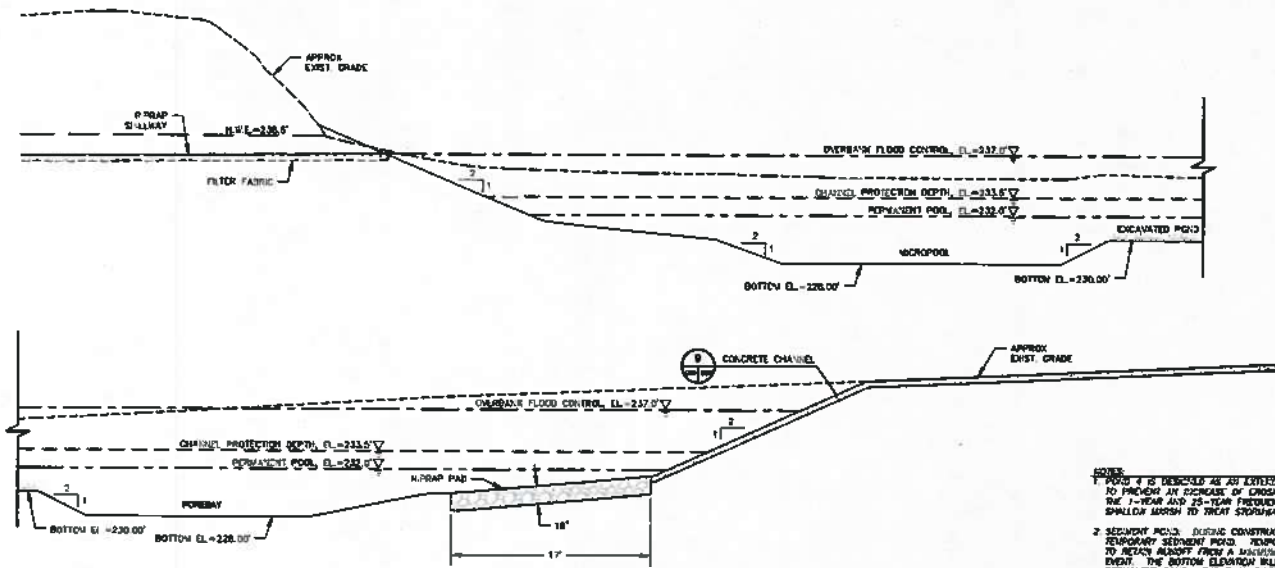
SECTION 1
1
1/2011

- NOTE:
 1. POND 3 IS DESIGNED AS AN EXTENDED DETENTION SHALLOW RETENTION POND TO PREVENT AN INCREASE OF EROSION AND FLOODING DOWNSTREAM FROM THE 1-YEAR AND 25-YEAR FREQUENCY STORM EVENTS AND TO CREATE A SHALLOW WEEDS TO TREAT STORMWATER.
 2. SEDIMENT POND: DURING CONSTRUCTION POND 3 SHALL BE USED AS A TEMPORARY SEDIMENT POND. TEMPORARY SEDIMENT PONDS ARE DESIGNED TO RETAIN RUNOFF FROM A MINIMUM OF THE 25-YEAR FREQUENCY EVENT. THE BOTTOM ELEVATION WILL BE LEFT 1-FOOT HIGHER THAN THE PERMANENT POND. THE POND ASER PIPE WILL BE USED WITH A DRAIN DATE ORIFICE OF 4.4-INCH HOLE x 6-INCH IRON AT AN EVENT OF 57.00'. THE EMERGENCY SPILLWAY FOR THE PERMANENT POND WILL BE CONSTRUCTED FOR THE SEDIMENT POND.



SECTION 2
2
1/2011

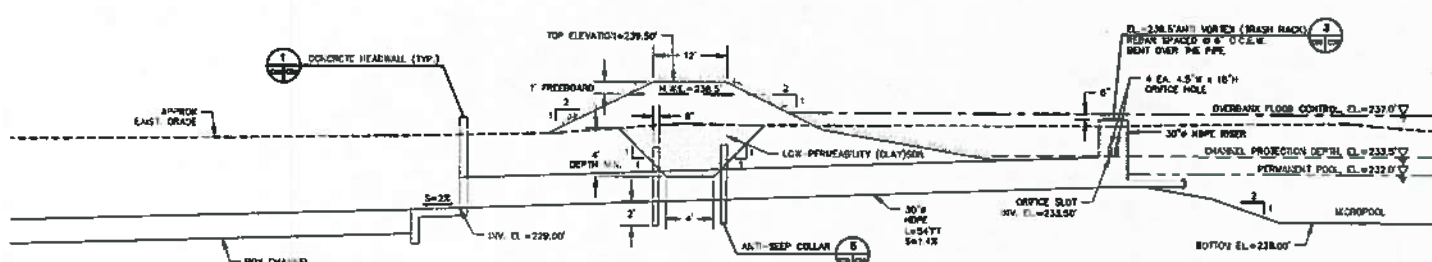
	REVISION					WORKSHEET GUAM	PROJECT NAME CRDOT DUMP CLOSURE CONSTRUCTION STORMWATER POND 3 SECTIONS	DMG. NO. C37	SHEET of
	NO. A	BY SMTS							
888 G Street, Suite 100 San Jose, CA 95128 Phone: (408) 255-7700 Fax: (408) 255-7701 www.ghd.com									



NOTES:

1. POND 4 IS DESIGNED AS AN EXTENDED DETENTION SHALLOW SEDIMENT POOL TO PREVENT AN INCREASE OF EROSION AND FLOODING DOWNSTREAM FROM THE 1-YEAR AND 25-YEAR FREQUENCY STORM EVENTS AND TO CREATE A SHALLOW MARSH TO TREAT STORMWATER.

2. SEDIMENT POOL: DURING CONSTRUCTION POND 4 SHALL BE USED AS A TEMPORARY SEDIMENT POOL. TEMPORARY SEDIMENT POOLS ARE DESIGNED TO RETAIN SEDIMENT FROM A MAXIMUM OF THE 13-INCH PRECIPITATION EVENT. THE BOTTOM ELEVATION WILL BE LEFT 1-FOOT HIGHER THAN THE PERMANENT POOL. THE FINAL RISER PIPE WILL BE USED WITH A DRAIN BODY ORIFICE OF 2.5-INCH WIDE x 8-INCH HIGH AT AN ELEVATION OF 237.00. THE EMERGENCY SPILLWAY FOR THE PERMANENT POOL WILL BE CONSTRUCTED FOR THE SEDIMENT POOL.



REVISION		
NO.	BY	DATE
A	TB	3/13/13
		ISSUED FOR 90% REVIEW

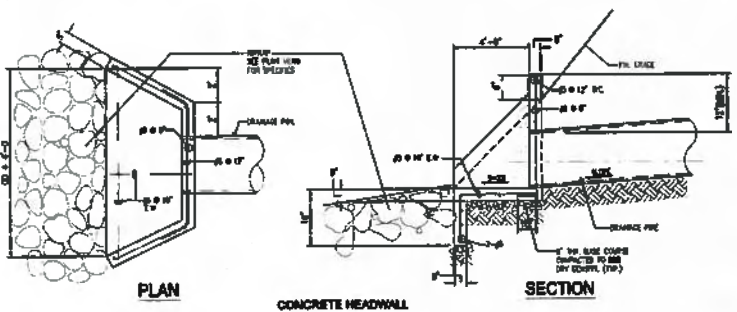


DESIGNED BY	DATE
CHECKED BY	3/4/13
APPROVED BY	

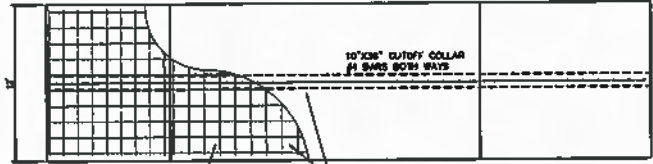
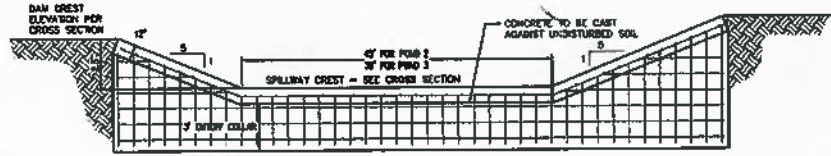


TERMINOLOGY	PROJECT NAME	DWG. NO.	SHEET
GUAM	ORDOT DUMP CLOSURE CONSTRUCTION	C38	07
	STORMWATER POND 4 SECTIONS		
PROJECT NO.	2011.A057		CAD FILE: 04.385 - 00C - C38.dwg

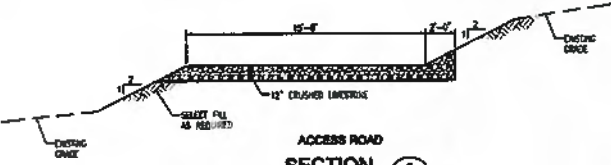
ISSUED FOR 90% REVIEW



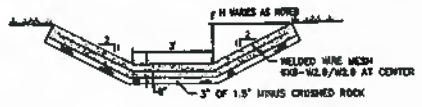
CONCRETE HEADWALL
DETAIL 1
12' x 14'



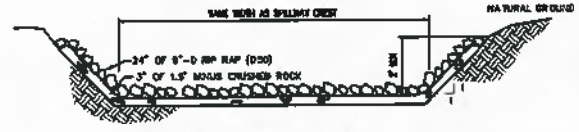
EMERGENCY SPILLWAY CREST DETAIL
DETAIL 6
10' x 12'



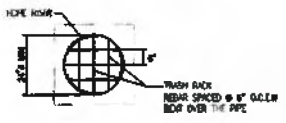
ACCESS ROAD
SECTION 2
12' x 12'



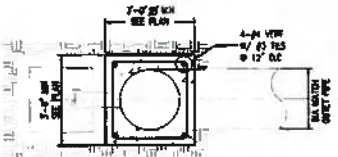
CONCRETE CHANNEL
DETAIL 8
12' x 12'



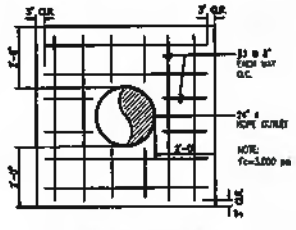
EMERGENCY SPILLWAY DETAIL
DETAIL 7
12' x 12'



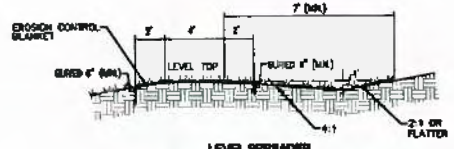
ANTI VORTEX (TRASH RACK)
DETAIL 3
12' x 12'



CONCRETE PEDESTAL
DETAIL 4
12' x 12'



ANTI SEEP COLLAR DETAIL
DETAIL 5
12' x 12'



LEVEL SPREADER
DETAIL 8
12' x 12'



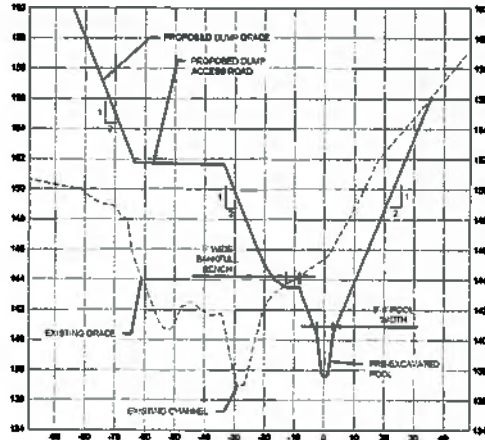
REVISION	
No. BY DATE	DESCRIPTION
A	TB 11/13 ISSUED FOR 90% REVIEW



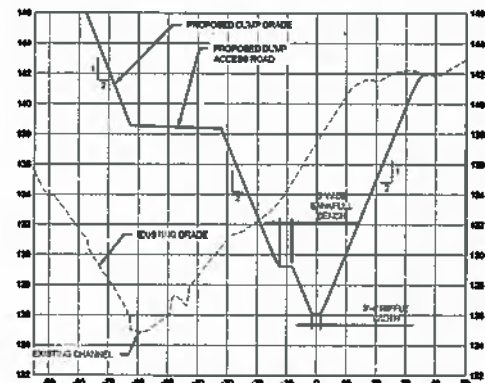
DESIGN BY	WTD	3/4/13
CHECKED BY	WTD	AS BACH
APPROVED BY	WTD	TS
DATE		

TERRITORY	PROJECT NAME	DMG. NO.	SHEET
GUAM	ORDOT DUMP CLOSURE CONSTRUCTION	C39	OF
PROJECT NO. - 2011.0097		CAD FILE: 04.385 - 00C - C39.dwg	

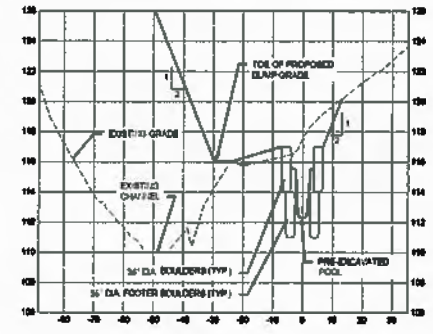
ISSUED FOR 90% REVIEW



STATION 5+34
SECTION 1
SCALE H: 1"=20' V: 1"=4'



STATION 7+32
SECTION 2
SCALE H: 1"=20' V: 1"=4'



STATION 8+30
SECTION 3
SCALE H: 1"=20' V: 1"=4'



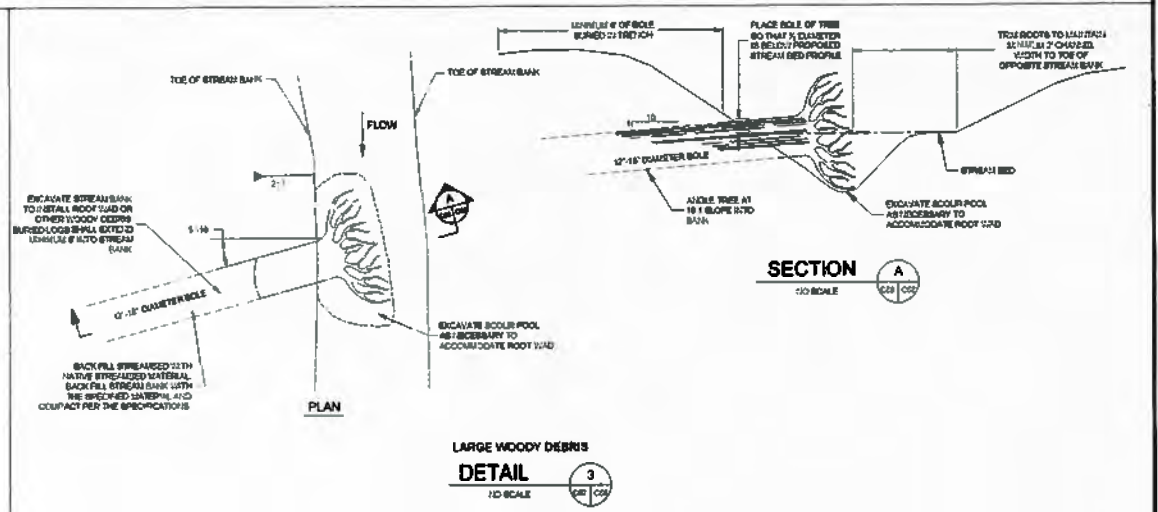
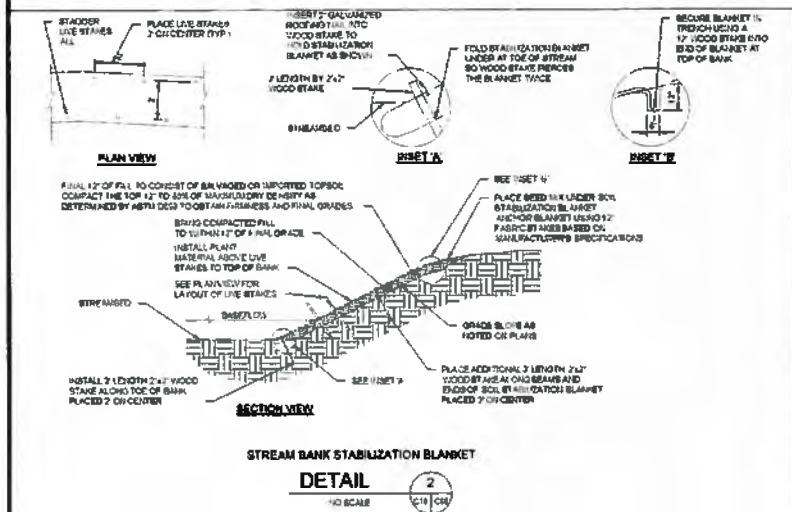
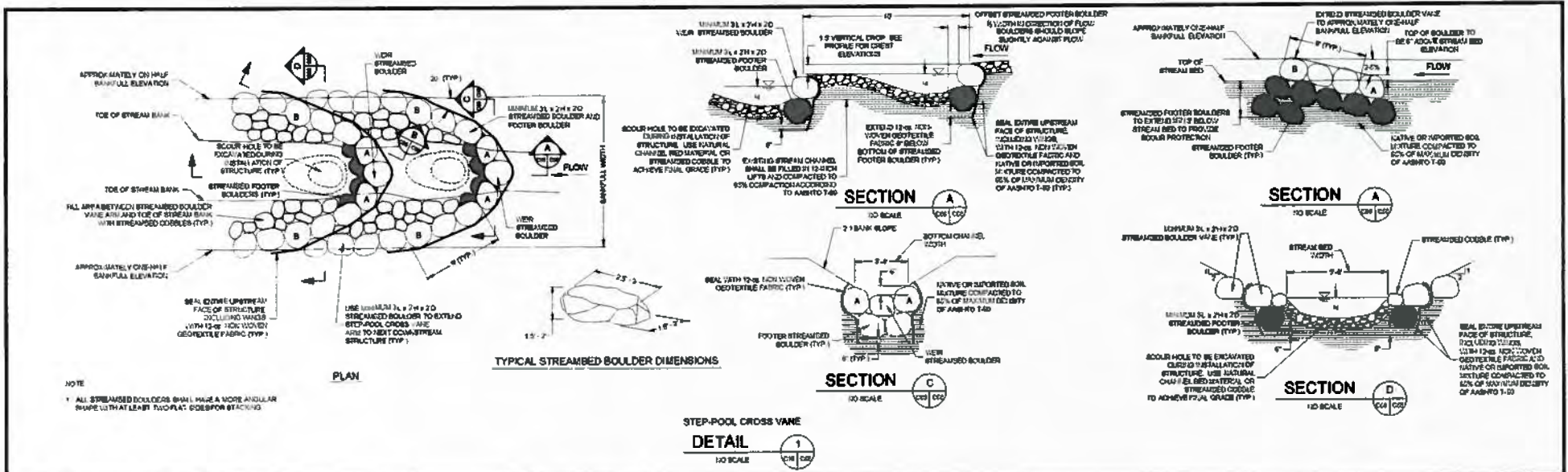
REVISION:		
No.	BY	DATE



DESIGN	DATE
CHECKED	DATE
APPROVED	DATE
BY	
DATE	

TERRITORY	PROJECT NAME	DWG. NO.	SHEET
GUAM	ORDOT DUMP CLOSURE CONSTRUCTION CHANNEL RELOCATION TYPICAL SECTIONS	C65	- of -
PROJECT NO. - 650A-12-0X		CADD FILE:	

ISSUED FOR 90% REVIEW



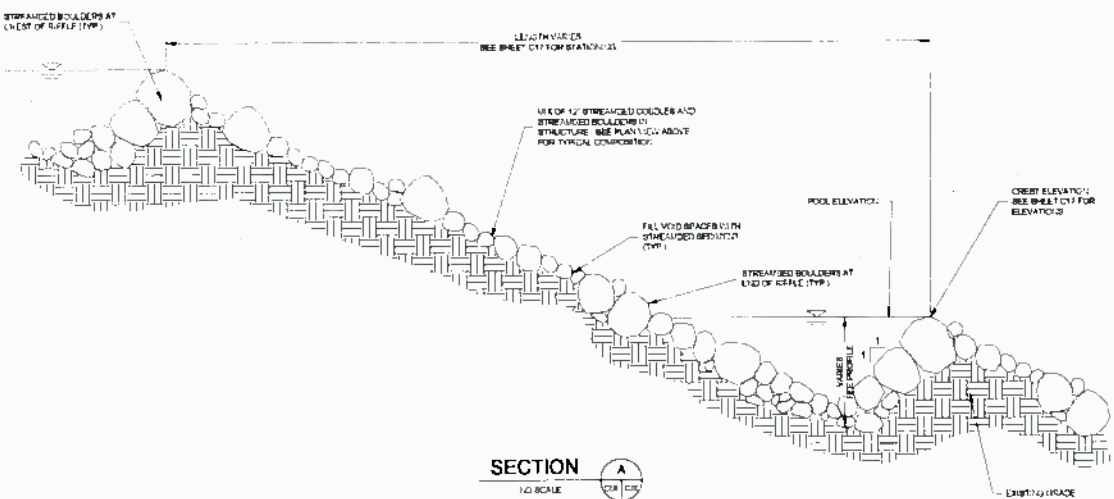
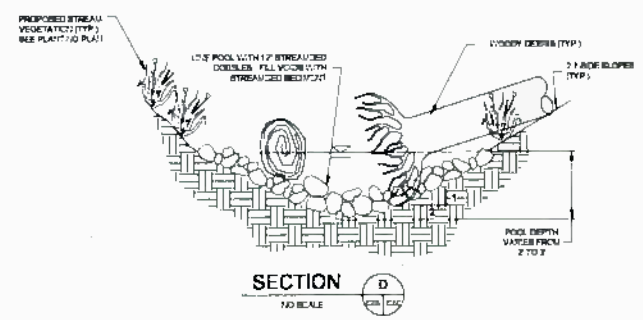
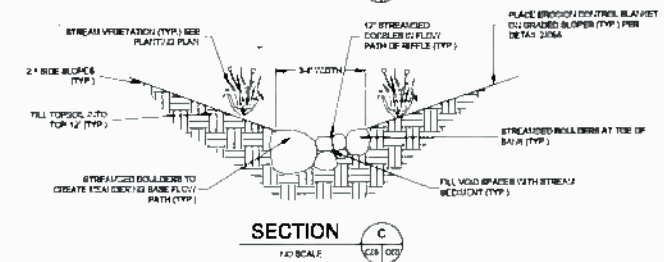
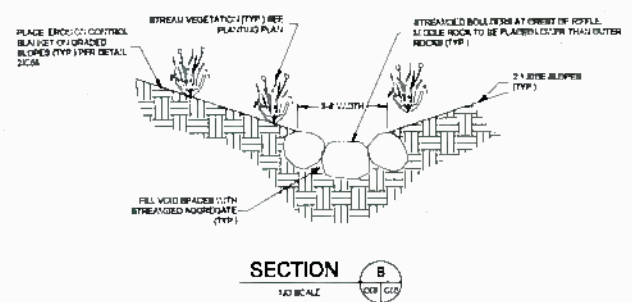
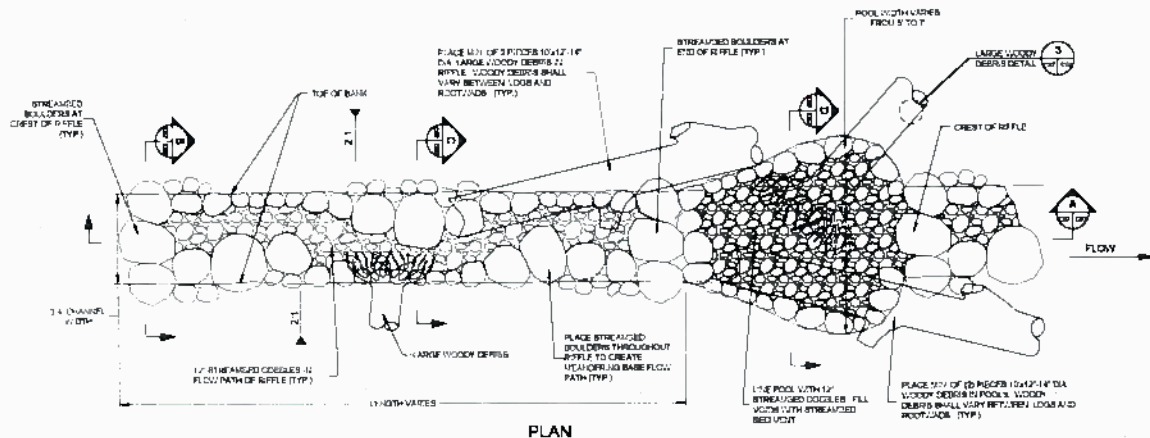
REV.	DATE	DESCRIPTION



DESIGNER	DATE	CHECKED	SCALE

TERRITORY	PROJECT NAME	DWG. NO.	SHEET
GUAM	ORDO DUMP CLOSURE CONSTRUCTION CHANNEL RELOCATION STREAM CONSTRUCTION DETAILS	C66	21 of XX
PROJECT NO.	GSWA-12-0X		

ISSUED FOR 90% REVIEW



ROCK RIFFLE/POOL COMPLEX
DETAIL 1
NO SCALE
C28 / C30



NO.	BY	DATE	REVISION	DESCRIPTION

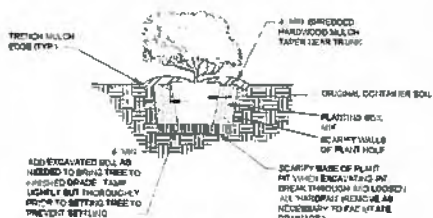


DESIGN:	DL	DATE:	
CHECKED:	DL	SCALE:	NTS
PROJECT MANAGER:	JP	DRAWN BY:	DL
APPROVED:	DL		

TERRITORY:	GUAM	PROJECT NAME:	ORDOT DUMP CLOSURE CONSTRUCTION	DWG. NO.:	C67	SHEET:	22 OF XX
PROJECT RD.:	GS-12-0X	CAD FILE:					

THIS WORK WAS PREPARED BY ME OR SOMEONE UNDER MY DIRECT SUPERVISION

ISSUED FOR 80% REVIEW

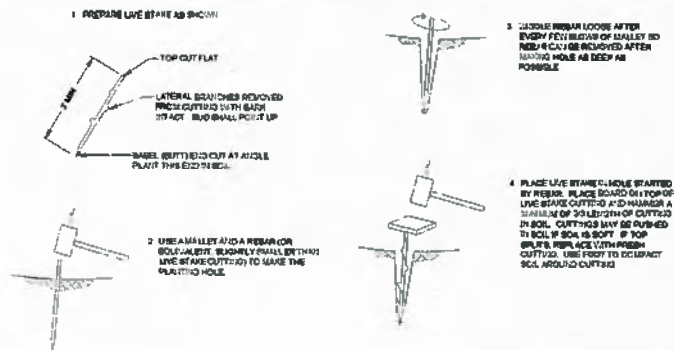


GENERAL SHRUB PLANTING

DETAIL

1/10 SCALE (1/8" = 1'-0")

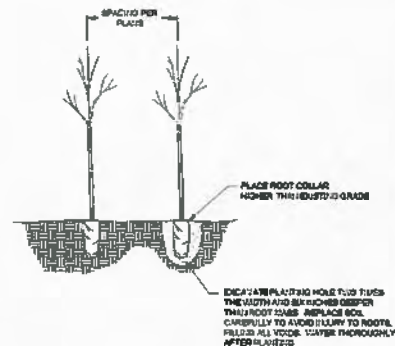
STEPS FOR LIVE STAKE PLANTING



LIVE STAKE PLANTING

DETAIL

1/10 SCALE (1/8" = 1'-0")



TREE/SHRUB TUBING PLANTING

DETAIL

1/10 SCALE (1/8" = 1'-0")

PLANTING SCHEDULE

QUANTITY	SCIENTIFIC NAME	COMMON/INDIGENOUS NAME	FORM	BODY	SPACING (S/C)	NOTES
27	BAKOSTONIA ARVACA	PATTINFEREN LILI TREE	TREE	TUBING	10'	
9	BARRINGTONIA PACE VIOBA	SAGABAT	TREE	60 COCK		
33	BARRINGTONIA PACE VIOBA	SAGABAT	TREE	TUBING		
18	CORBERA GLATA	CHUTE	TREE	60 COCK	10'	
36	CORBERA GLATA	CHUTE	TREE	TUBING	10'	
18	HODGKINSONIA	PAGOSERA HEDOSIA	TREE	60 COCK		
48	HODGKINSONIA	PAGOSERA HEDOSIA	TREE	TUBING	10'	
32	TEPOMALLA CAYANA	TREKIA	SHRUB	30 COCK		
10	MELCHIA VALDESIANA VAR. VALDESIANA	SAVAFI	SHRUB	30 COCK		
40	MELCHIA VALDESIANA VAR. VALDESIANA	SAVAFI	SHRUB	TUBING	10'	
32	PPER OLANAGORE	PURPAU HANETAWLOPPEN	SHRUB	30 COCK		
18	SCOPARIA BANCALA	NASABO	SHRUB	30 COCK		
32	SCOPARIA BANCALA	NASABO	SHRUB	TUBING	10'	
600	SCOPARIA BANCALA	OROKERA NEOLACE FERN	FERN	PLUS COCK		
600	NEPENTHES BOMBANA	AMALUOCANSE BAYOD FERN	FERN	PLUS COCK		
600	NEPENTHES BOMBANA	KAPALASUARY FERN	FERN	PLUS COCK		
600	NEPENTHES BOMBANA	TROPICAL TROPICUM	SEEDS	PLUS COCK		
600	BOLERA LINDORFERIA	KEYE HAWKISH	SEEDS	PLUS COCK		
600	BOLERA POLYCARPA	KURUBH	SEEDS	PLUS COCK		

NATIVE SEED MIX

QUANTITY	SCIENTIFIC NAME	COMMON/INDIGENOUS NAME	FORM	BODY	NOTE
10	LEUCOPHYLLON	OROKERA NEOLACE FERN	FERN	SEED	
10	NEPENTHES BOMBANA	AMALUOCANSE BAYOD FERN	FERN	SEED	
5	NEPENTHES BOMBANA	AMALUOCANSE BAYOD FERN	FERN	SEED	
5	NEPENTHES BOMBANA	KAPALASUARY FERN	FERN	SEED	
10	SCOPARIA BANCALA	SAVAFI GRASS	GRASS	SEED	
5	SCOPARIA BANCALA	SAVAFI GRASS	GRASS	SEED	
10	NEPENTHES BOMBANA	TROPICAL TROPICUM	SEEDS	SEED	
10	BOLERA LINDORFERIA	KEYE HAWKISH	SEEDS	SEED	
10	BOLERA POLYCARPA	KURUBH	SEEDS	SEED	



NO.	BY	DATE	REVISION	DESCRIPTION

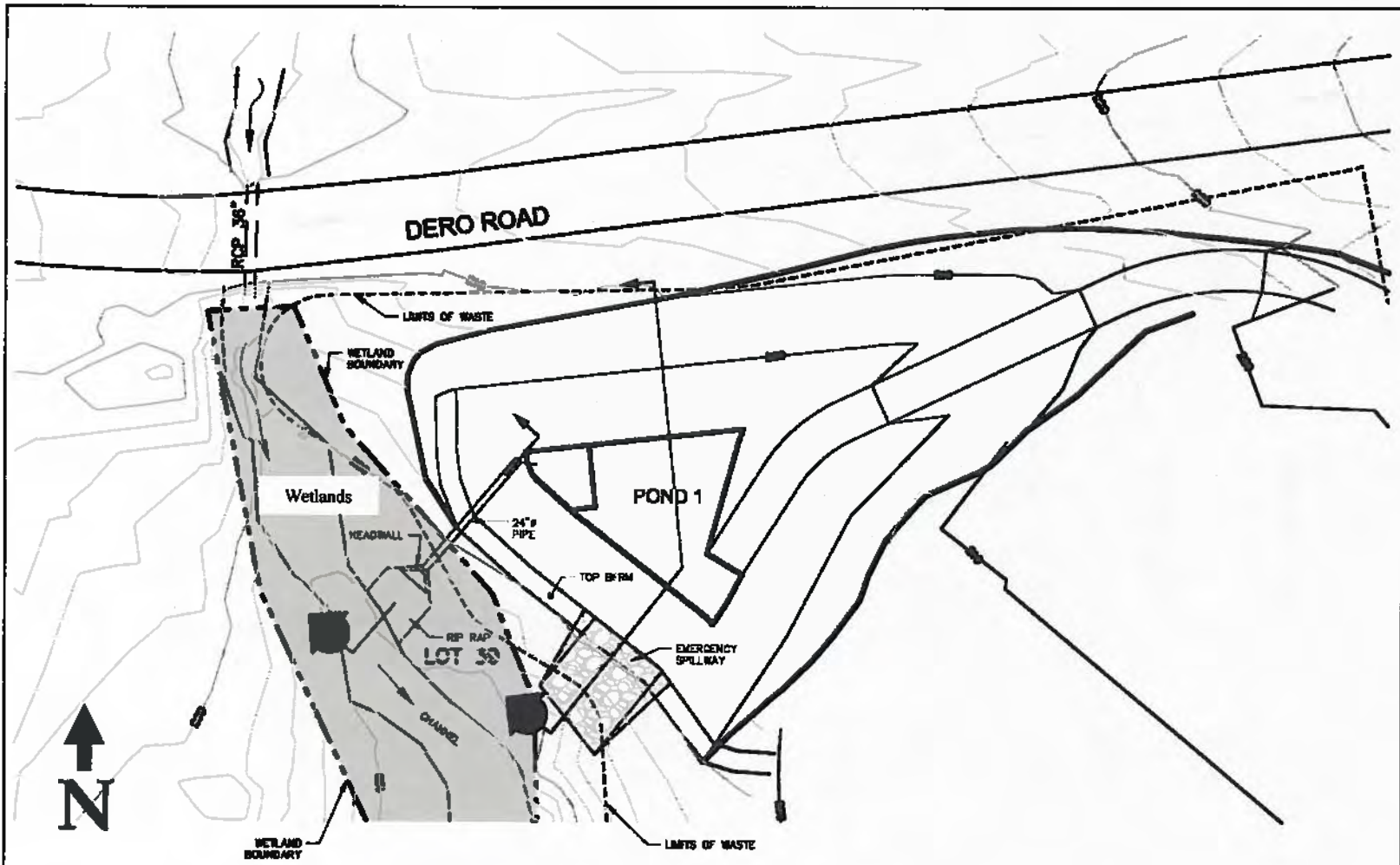


DESIGN BY	DATE
CHECKED BY	SCALE
RECOMMENDED BY	DATE
APPROVED BY	

TERRITORY	PROJECT NAME	DCG. NO.	SHEET
GUAM	ORDOT DUMP CLOSURE CONSTRUCTION CHANNEL RELOCATION PLANTING DETAILS	C68	

949 TOTAL ASS. PROVIDED BY ME TO COME UNDER MY DIRECT SUPERVISION PROJECT NO. 05WA-12-GA SHEET FILE

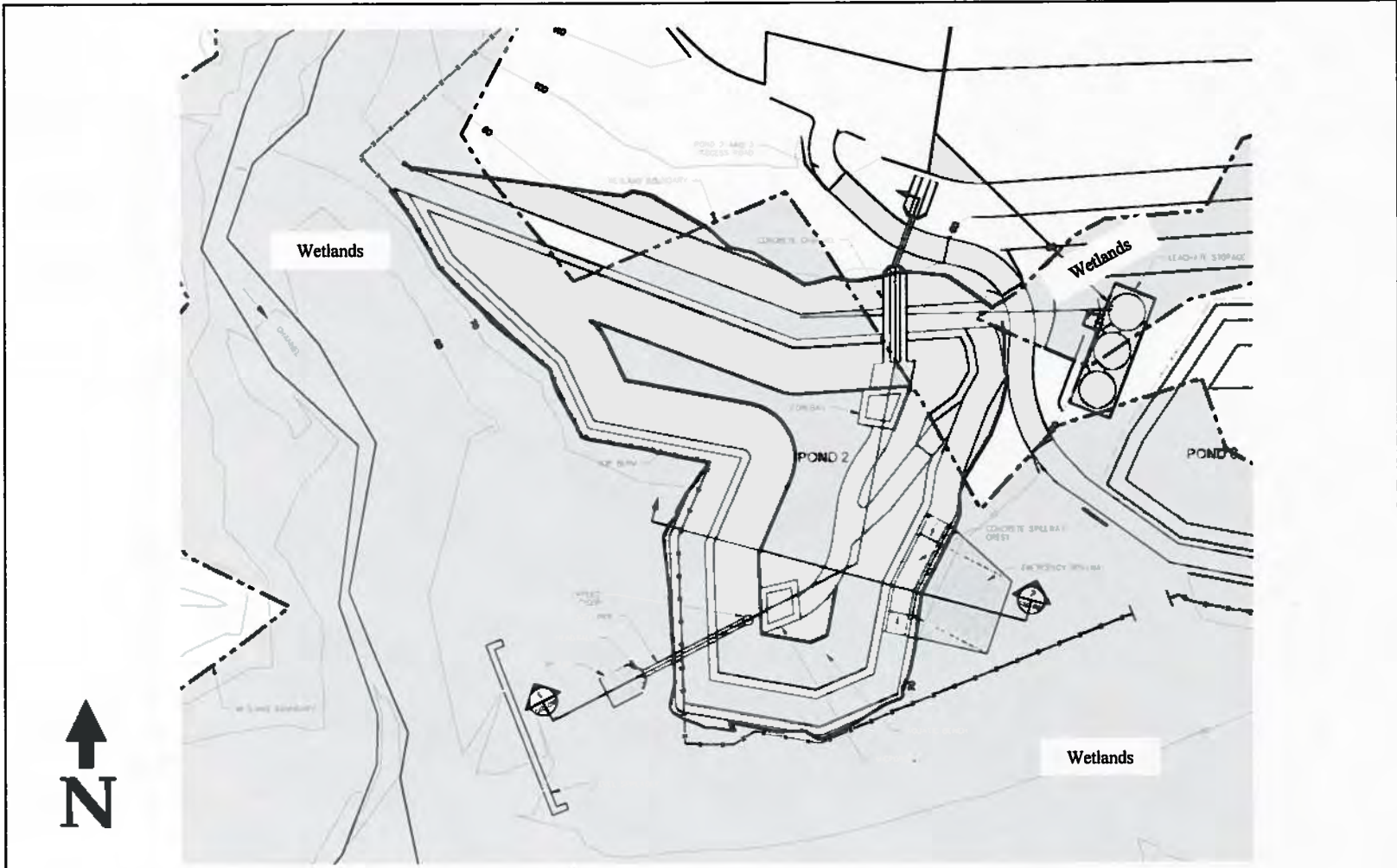
ISSUED FOR 80% REVIEW



**Dry Detention Pond No. 1
Ordot Dump Closure Construction**

ARC Environmental Services Inc.

Date April 2013
Diagram No. 1

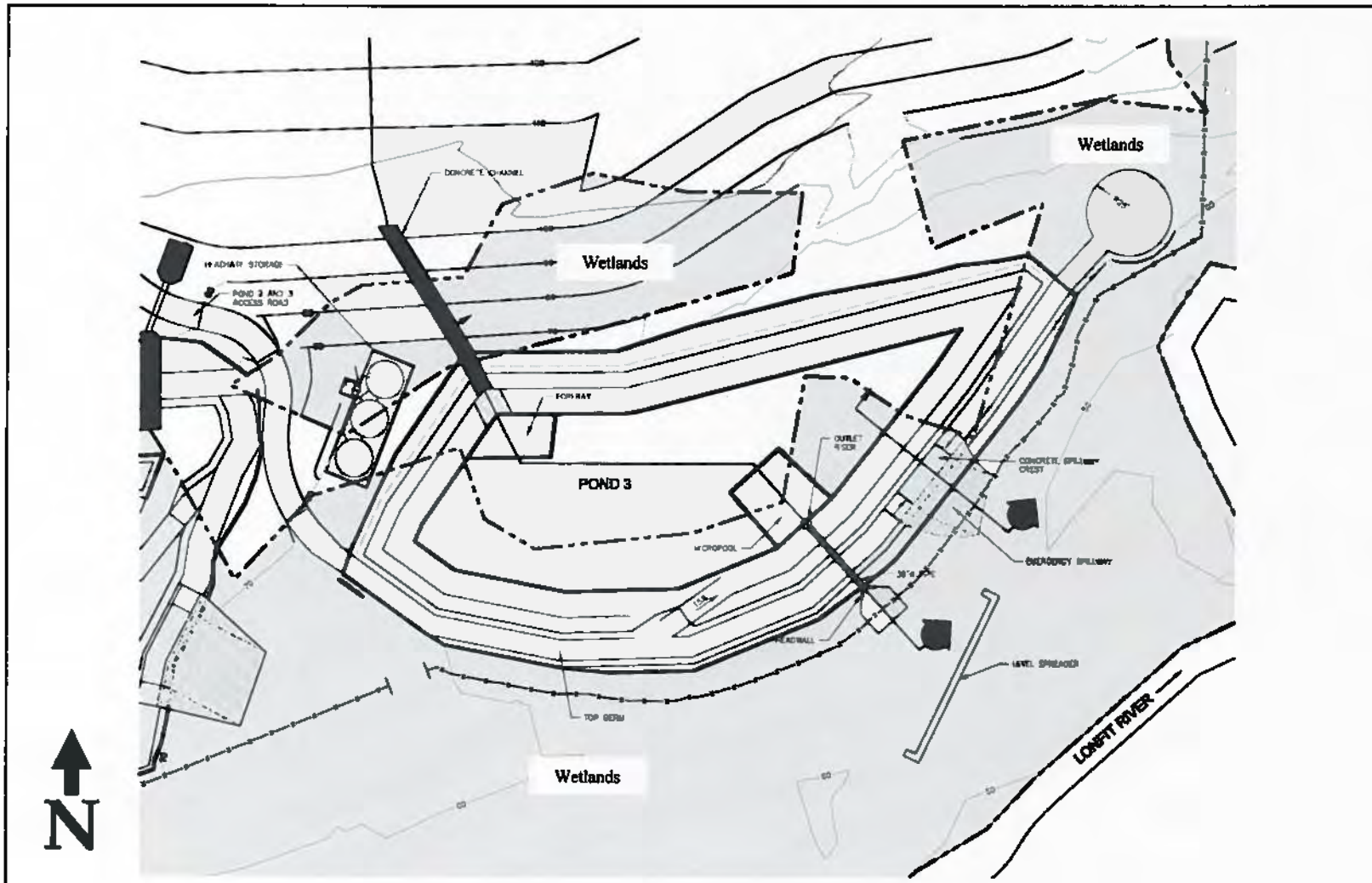


**Extended Detention Shallow Wetland Pond No. 2
 Ordot Dump Closure Construction**

ARC Environmental Services Inc.

Date
 April 2013

Diagram No.
 2

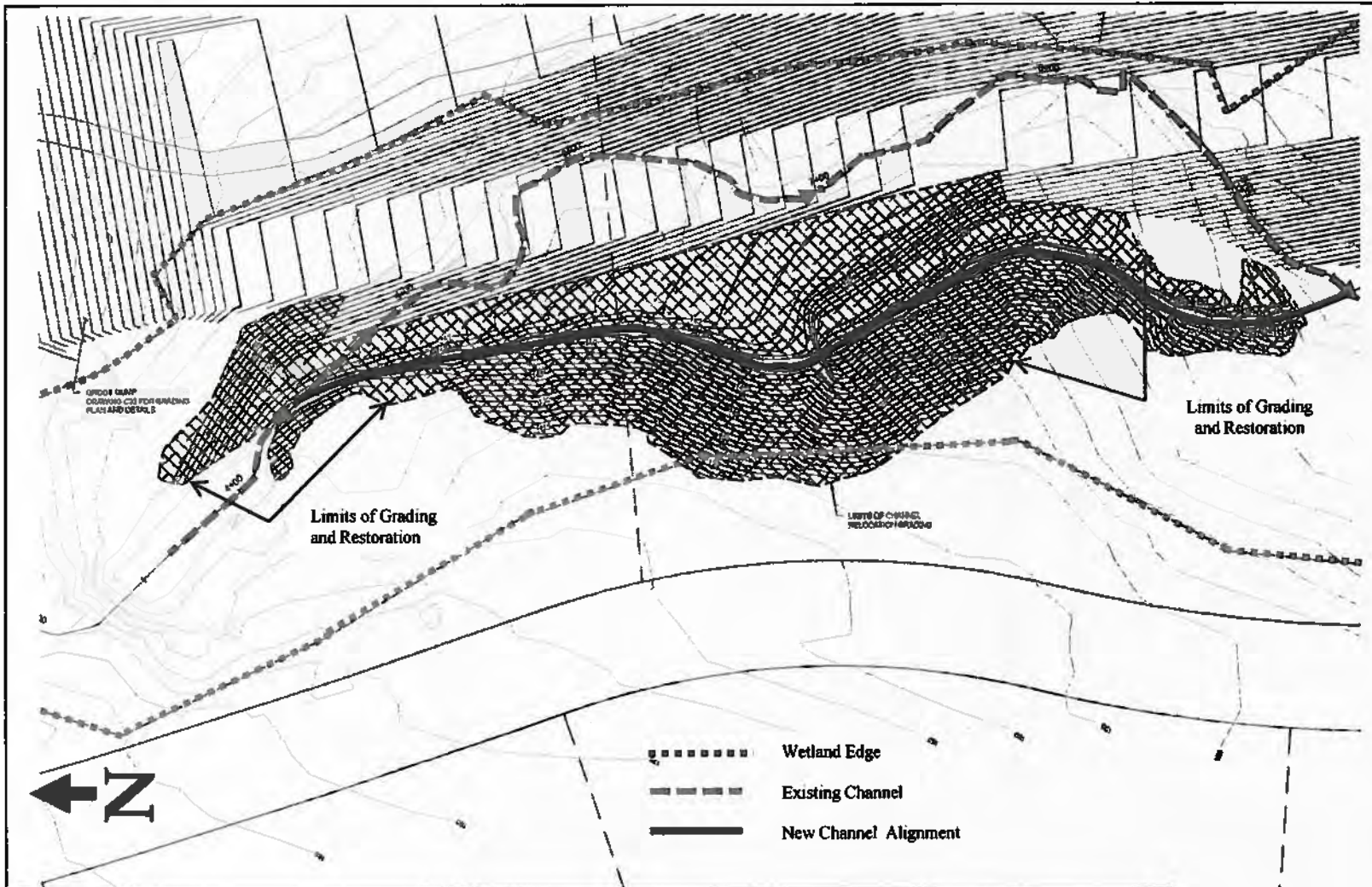


**Extended Detention Shallow Wetland Pond No. 3
Ordot Dump Closure Construction**

ARC Environmental Services Inc.

Date
April 2013

Diagram No.
3



- Wetland Edge
- - - - Existing Channel
- New Channel Alignment

**Proposed Western Channel Relocation
Ordot Dump Closure Construction**

ARC Environmental Services Inc.

Date
April 2013

Diagram No.
4